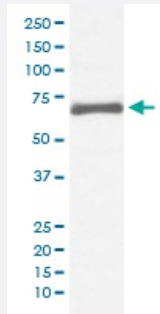


AFP monoclonal antibody, clone AAOO-1

Catalog # MAB19532 Size 100 uL

Applications



Western Blot (Cell lysate)

Western blot analysis of HepG2 cell lysate with AFP monoclonal antibody.

Specification

Product Description Rabbit monoclonal antibody raised against synthetic peptide of human AFP.

Immunogen A synthetic peptide corresponding to human AFP.

Host Rabbit

Reactivity Human

Form Liquid

Purification Affinity purification

Isotype IgG

Recommend Usage

- Immunocytochemistry (1:50-1:200)
- Immunofluorescence (1:50-1:200)
- Immunohistochemistry (1:50-1:200)
- Immunoprecipitation (1:50)
- Flow Cytometry (1:50)
- Western Blot (1:500-1:2000)
- The optimal working dilution should be determined by the end user.

Storage Buffer In PBS, pH 7.4, 150mM NaCl, 0.02% sodium azide and 50% glycerol.

Storage Instruction

Store at -20°C for one year. After reconstitution, at 4°C for one month. It can also be aliquotted and stored frozen at -20°C for a longer time. Avoid repeated freezing and thawing.

Note

This product contains sodium azide: a POISONOUS AND HAZARDOUS SUBSTANCE which should be handled by trained staff only.

Applications

- Western Blot (Cell lysate)

Western blot analysis of HepG2 cell lysate with AFP monoclonal antibody.

- Immunohistochemistry (Formalin/PFA-fixed paraffin-embedded sections)

- Immunocytochemistry

- Immunofluorescence

- Immunoprecipitation

- Flow Cytometry

Gene Info — AFP

Entrez GeneID[174](#)**Protein Accession#**[P02771](#)**Gene Name**

AFP

Gene Alias

FETA, HPAFP

Gene Description

alpha-fetoprotein

Omim ID[104150](#)**Gene Ontology**[Hyperlink](#)

Gene Summary

This gene encodes alpha-fetoprotein, a major plasma protein produced by the yolk sac and the liver during fetal life. Alpha-fetoprotein expression in adults is often associated with hepatoma or teratoma. However, hereditary persistence of alpha-fetoprotein may also be found in individuals with no obvious pathology. The protein is thought to be the fetal counterpart of serum albumin, and the alpha-fetoprotein and albumin genes are present in tandem in the same transcriptional orientation on chromosome 4. Alpha-fetoprotein is found in monomeric as well as dimeric and trimeric forms, and binds copper, nickel, fatty acids and bilirubin. The level of alpha-fetoprotein in amniotic fluid is used to measure renal loss of protein to screen for spina bifida and anencephaly. [provided by RefSeq]

Other Designations

OTTHUMP00000160480|alpha-1-fetoprotein|alpha-fetoglobulin

Disease

- [Carcinoma](#)
- [Liver Cirrhosis](#)
- [Liver Neoplasms](#)