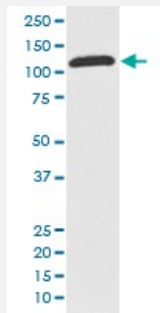


ABCF1 monoclonal antibody, clone FGE-1

Catalog # MAB19514 Size 100 uL

Applications



Western Blot (Cell lysate)

Western blot analysis of K562 cell lysate with ABCF1 monoclonal antibody.

Specification

Product Description Rabbit monoclonal antibody raised against synthetic peptide of human ABCF1.

Immunogen A synthetic peptide corresponding to human ABCF1.

Host Rabbit

Reactivity Human, Rat

Form Liquid

Purification Affinity purification

Isotype IgG

Recommend Usage
 Immunocytochemistry (1:50-1:100)
 Immunofluorescence (1:50-1:100)
 Immunohistochemistry (1:50-1:100)
 Western Blot (1:500-1:2000)
 The optimal working dilution should be determined by the end user.

Storage Buffer In PBS, pH 7.4, 150mM NaCl, 0.02% sodium azide and 50% glycerol.

Storage Instruction

Store at -20°C for one year. After reconstitution, at 4°C for one month. It can also be aliquotted and stored frozen at -20°C for a longer time. Avoid repeated freezing and thawing.

Note

This product contains sodium azide: a POISONOUS AND HAZARDOUS SUBSTANCE which should be handled by trained staff only.

Applications

- Western Blot (Cell lysate)

Western blot analysis of K562 cell lysate with ABCF1 monoclonal antibody.

- Immunohistochemistry (Formalin/PFA-fixed paraffin-embedded sections)
- Immunocytochemistry
- Immunofluorescence

Gene Info — ABCF1

Entrez GeneID[23](#)**Protein Accession#**[Q8NE71](#)**Gene Name**

ABCF1

Gene Alias

ABC27, ABC50

Gene Description

ATP-binding cassette, sub-family F (GCN20), member 1

Omim ID[603429](#)**Gene Ontology**[Hyperlink](#)**Gene Summary**

The protein encoded by this gene is a member of the superfamily of ATP-binding cassette (ABC) transporters. ABC proteins transport various molecules across extra- and intra-cellular membranes. ABC genes are divided into seven distinct subfamilies (ABC1, MDR/TAP, MRP, ALD, OABP, GCN20, White). This protein is a member of the GCN20 subfamily. Unlike other members of the superfamily, this protein lacks the transmembrane domains which are characteristic of most ABC transporters. This protein may be regulated by tumor necrosis factor-alpha and play a role in enhancement of protein synthesis and the inflammation process. [provided by RefSeq]

Other Designations

ATP-binding cassette 50 (TNF-alpha stimulated)|ATP-binding cassette, sub-family F, member 1|OTTHUMP00000029110|OTTHUMP00000029111|TNFalpha-inducible ATP-binding protein

Disease

- [Genetic Predisposition to Disease](#)
- [Lupus Erythematosus](#)
- [Spondylitis](#)