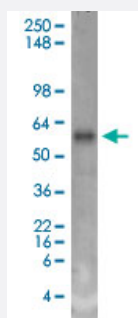


# SLC18A3 monoclonal antibody, clone S6-38 (ATTO 594)

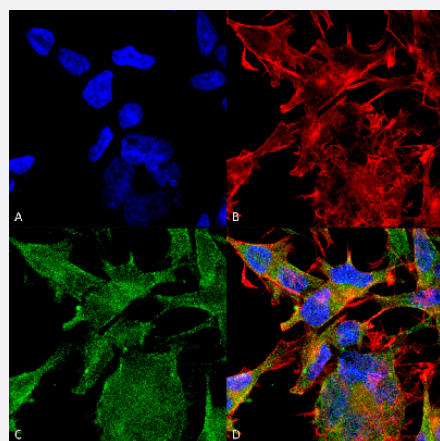
Catalog # MAB18192      Size 100 ug

## Applications



### Western Blot (Tissue lysate)

Western Blot analysis of rat brain membrane lysate with SLC18A3 monoclonal antibody, clone S6-38 (ATTO 594) (Cat # MAB18192).



### Immunocytochemistry

Immunocytochemical staining of SK-N-BE with SLC18A3 monoclonal antibody, clone S6-38 (ATTO 594) (Cat # MAB18192). (A) DAPI (blue) nuclear stain (B) Phalloidin Texas Red F-Actin stain (C) SLC18A3 Antibody and (D) Composite.

## Specification

<b>Product Description</b>	Mouse monoclonal antibody raised against synthetic peptide of human SLC18A3.
<b>Immunogen</b>	A synthetic peptide corresponding to amino acids 521-532 of human SLC18A3.
<b>Host</b>	Mouse
<b>Reactivity</b>	Human, Rat
<b>Form</b>	Liquid

Conjugation	ATTO 594
Purification	Protein G purification
Isotype	IgG1
Recommend Usage	Immunocytochemistry (1:100) Immunofluorescence (1:100) Immunohistochemistry (Formalin/PFA-fixed paraffin-embedded sections) (1:200) Western Blot (1:1000) The optimal working dilution should be determined by the end user.
Storage Buffer	In PBS, pH 7.4 (50% glycerol, 0.09% sodium azide).
Storage Instruction	Store at -20°C.
Note	This product contains sodium azide: a POISONOUS AND HAZARDOUS SUBSTANCE which should be handled by trained staff only.

## Applications

- Western Blot (Tissue lysate)

Western Blot analysis of rat brain membrane lysate with SLC18A3 monoclonal antibody, clone S6-38 (ATTO 594) (Cat # MAB18192).

- Immunohistochemistry (Formalin/PFA-fixed paraffin-embedded sections)

- Immunocytochemistry

Immunocytochemical staining of SK-N-BE with SLC18A3 monoclonal antibody, clone S6-38 (ATTO 594) (Cat # MAB18192).  
(A) DAPI (blue) nuclear stain (B) Phalloidin Texas Red F-Actin stain (C) SLC18A3 Antibody and (D) Composite.

- Immunofluorescence

## Gene Info — SLC18A3

Entrez GeneID	<a href="#">6572</a>
Protein Accession#	<a href="#">Q16572</a>
Gene Name	SLC18A3
Gene Alias	MGC12716, VACHT
Gene Description	solute carrier family 18 (vesicular acetylcholine), member 3

Omim ID [600336](#)

Gene Ontology [Hyperlink](#)

**Gene Summary** This gene is a member of the vesicular amine transporter family. The encoded transmembrane protein transports acetylcholine into secretory vesicles for release into the extracellular space. Acetylcholine transport utilizes a proton gradient established by a vacuolar ATPase. This gene is located within the first intron of the choline acetyltransferase gene. [provided by RefSeq]

**Other Designations** OTTHUMP00000019582|solute carrier family 18, member 3|vesicular acetylcholine transporter

## Disease

- [Alzheimer disease](#)
- [Cerebral Amyloid Angiopathy](#)
- [Genetic Predisposition to Disease](#)
- [Neuroblastoma](#)
- [Tobacco Use Disorder](#)