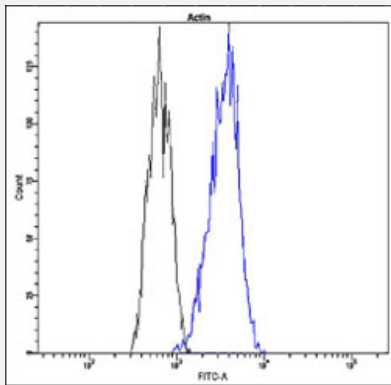


# ACTB monoclonal antibody, clone Q20-K (FITC)

Catalog # MAB16000      Size 1000 uL

## Applications



### Flow Cytometry

Flow cytometric analysis of human peripheral blood lymphocytes with ACTB monoclonal antibody, clone Q20-K (FITC) (Cat # MAB16000).

## Specification

Product Description	Rabbit monoclonal antibody raised against synthetic peptide of human ACTB.
Host	Rabbit
Reactivity	Human
Form	Liquid
Conjugation	FITC
Purification	EVAC purification
Isotype	IgG
Recommend Usage	Flow Cytometry The optimal working dilution should be determined by the end user.
Storage Buffer	In PBS (10 mg/mL BSA, 0.05% Sodium Azide).
Storage Instruction	Store in the dark at 4°C. Avoid prolonged exposure to light. Do not freeze.

**Note**

This product contains sodium azide: a POISONOUS AND HAZARDOUS SUBSTANCE which should be handled by trained staff only.

## Applications

- Flow Cytometry

Flow cytometric analysis of human peripheral blood lymphocytes with ACTB monoclonal antibody, clone Q20-K (FITC) (Cat # MAB16000).

## Gene Info — ACTB

Entrez GeneID	<a href="#">60</a>
---------------	--------------------

Protein Accession#	<a href="#">P60709</a>
--------------------	------------------------

Gene Name	ACTB
-----------	------

Gene Alias	PS1TP5BP1
------------	-----------

Gene Description	actin, beta
------------------	-------------

Omim ID	<a href="#">102630</a>
---------	------------------------

Gene Ontology	<a href="#">Hyperlink</a>
---------------	---------------------------

Gene Summary	This gene encodes one of six different actin proteins. Actins are highly conserved proteins that are involved in cell motility, structure, and integrity. This actin is a major constituent of the contractile apparatus and one of the two nonmuscle cytoskeletal actins. [provided by RefSeq]
--------------	---

Other Designations	PS1TP5-binding protein 1 actin, cytoplasmic 1 beta actin beta cytoskeletal actin
--------------------	--

## Pathway

- [Adherens junction](#)
- [Arrhythmogenic right ventricular cardiomyopathy \(ARVC\)](#)
- [Focal adhesion](#)
- [Hypertrophic cardiomyopathy \(HCM\)](#)
- [Leukocyte transendothelial migration](#)
- [Pathogenic Escherichia coli infection - EHEC](#)

- [Regulation of actin cytoskeleton](#)
- [Tight junction](#)
- [Vibrio cholerae infection](#)

## Disease

- [Breast cancer](#)
- [Breast Neoplasms](#)