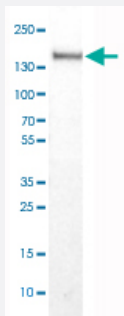


ITGAX monoclonal antibody, clone CL1831

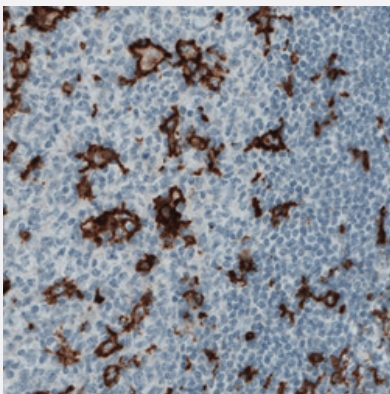
Catalog # MAB15721 Size 100 uL

Applications



Western Blot (Tissue lysate)

Western Blot analysis of human tonsil tissue lysate with ITGAX monoclonal antibody, clone CL1831 (Cat # MAB15721).



Immunohistochemistry (Formalin/PFA-fixed paraffin-embedded sections)

Immunohistochemical staining (Formalin-fixed paraffin-embedded sections) of human tonsil with ITGAX monoclonal antibody, clone CL1831 (Cat # MAB15721) shows strong immunoreactivity in the dendritic cells.

Specification

Product Description	Mouse monoclonal antibody raised against partial recombinant human ITGAX.
Immunogen	Recombinant protein corresponding to human ITGAX.
Epitope	This antibody binds to an epitope located within the peptide sequence LYDKRSKNLLGSRD as determined by overlapping synthetic peptides.
Sequence	QDGLVDLAVGARGQVLLLRTRPVLWVGVSQMFIPEIPSAFECREQVVSQTLVQSNICLYIDKR SKNLLGSRDLQSSVTLDLALDPGRLSPRATFQETKNRSLSRVRV
Host	Mouse

Reactivity	Human
Form	Liquid
Purification	Protein A purification
Isotype	IgG1
Recommend Usage	Immunohistochemistry (Formalin/PFA-fixed paraffin-embedded sections) (1:200-1:500) Western Blot (1:500-1:1000) The optimal working dilution should be determined by the end user.
Storage Buffer	In PBS, pH 7.2 (40% glycerol, 0.02% sodium azide).
Storage Instruction	Store at 4°C. For long term storage store at -20°C. Aliquot to avoid repeated freezing and thawing.
Note	This product contains sodium azide: a POISONOUS AND HAZARDOUS SUBSTANCE which should be handled by trained staff only.

Applications

- Western Blot (Tissue lysate)

Western Blot analysis of human tonsil tissue lysate with ITGAX monoclonal antibody, clone CL1831 (Cat # MAB15721).

- Immunohistochemistry (Formalin/PFA-fixed paraffin-embedded sections)

Immunohistochemical staining (Formalin-fixed paraffin-embedded sections) of human tonsil with ITGAX monoclonal antibody, clone CL1831 (Cat # MAB15721) shows strong immunoreactivity in the dendritic cells.

Gene Info — ITGAX

Entrez GeneID	3687
Protein Accession#	P20702
Gene Name	ITGAX
Gene Alias	CD11C, SLEB6
Gene Description	integrin, alpha X (complement component 3 receptor 4 subunit)
Omim ID	151510
Gene Ontology	Hyperlink

Gene Summary

This gene encodes the integrin alpha X chain protein. Integrins are heterodimeric integral membrane proteins composed of an alpha chain and a beta chain. This protein combines with the beta 2 chain (ITGB2) to form a leukocyte-specific integrin referred to as inactivated-C3b (iC3b) receptor 4 (CR4). The alpha X beta 2 complex seems to overlap the properties of the alpha M beta 2 integrin in the adherence of neutrophils and monocytes to stimulated endothelium cells, and in the phagocytosis of complement coated particles. [provided by RefSeq]

Other Designations

OTTHUMP00000163299|integrin alpha X|integrin, alpha X (antigen CD11C (p150), alpha polypeptide)|leu M5, alpha subunit|leukocyte surface antigen p150,95, alpha subunit|myeloid membrane antigen, alpha subunit|p150 95 integrin alpha chain

Pathway

- [Regulation of actin cytoskeleton](#)

Disease

- [Genetic Predisposition to Disease](#)
- [Helicobacter Infections](#)
- [Lupus Erythematosus](#)
- [Stomach Ulcer](#)