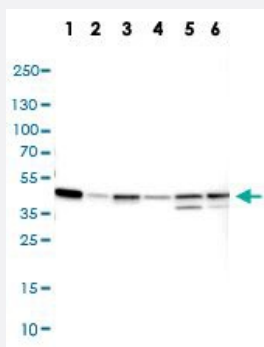


# ACTB monoclonal antibody, clone CL3868

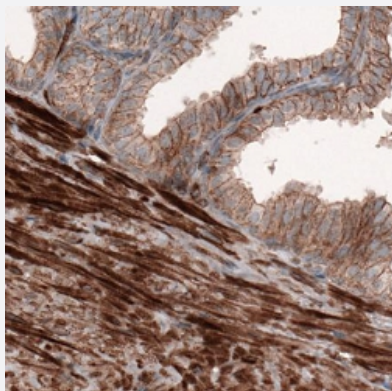
Catalog # MAB15695      Size 100 uL

## Applications



### Western Blot

Western Blot (Cell lysate) analysis of (1) Human HeLa cell, (2) Human HEK 293 cell, (3) Human A-431 cell, (4) Human HepG2 cell. (5) Mouse NIH-3T3 cell, (6) Rat NBT-II cell.



### Immunohistochemistry (Formalin/PFA-fixed paraffin-embedded sections)

Immunohistochemical staining (Formalin-fixed paraffin-embedded sections) of human prostate shows strong cytoplasmic immunoreactivity in smooth muscle and weak positivity in glandular cells.

## Specification

Product Description	Mouse monoclonal antibody raised against synthetic peptide of human ACTB.
Immunogen	A synthetic peptide corresponding to human ACTB.
Sequence	PKANREKMTQIMFETFNTPAMYVAIQ
Host	Mouse
Reactivity	Human, Mouse, Rat
Form	Liquid

Purification	Protein A purification
Isotype	IgG1
Recommend Usage	Immunohistochemistry (Formalin/PFA-fixed paraffin-embedded sections) (1:5000-1:10000) Western Blot (1:500-1:1000) The optimal working dilution should be determined by the end user.
Storage Buffer	In PBS, pH 7.2 (40% glycerol, 0.02% sodium azide).
Storage Instruction	Store at 4°C. For long term storage store at -20°C. Aliquot to avoid repeated freezing and thawing.
Note	This product contains sodium azide: a POISONOUS AND HAZARDOUS SUBSTANCE which should be handled by trained staff only.

## Applications

- Western Blot

Western Blot (Cell lysate) analysis of (1) Human HeLa cell, (2) Human HEK 293 cell, (3) Human A-431 cell, (4) Human HepG2 cell, (5) Mouse NIH-3T3 cell, (6) Rat NBT-II cell.

- Immunohistochemistry (Formalin/PFA-fixed paraffin-embedded sections)

Immunohistochemical staining (Formalin-fixed paraffin-embedded sections) of human prostate shows strong cytoplasmic immunoreactivity in smooth muscle and weak positivity in glandular cells.

## Gene Info — ACTB

Entrez GeneID	<a href="#">60</a>
Protein Accession#	<a href="#">P60709</a>
Gene Name	ACTB
Gene Alias	PS1TP5BP1
Gene Description	actin, beta
Omim ID	<a href="#">102630</a>
Gene Ontology	<a href="#">Hyperlink</a>
Gene Summary	This gene encodes one of six different actin proteins. Actins are highly conserved proteins that are involved in cell motility, structure, and integrity. This actin is a major constituent of the contractile apparatus and one of the two nonmuscle cytoskeletal actins. [provided by RefSeq]

**Other Designations**

PS1TP5-binding protein 1|actin, cytoplasmic 1|beta actin|beta cytoskeletal actin

**Pathway**

- [Adherens junction](#)
- [Arrhythmogenic right ventricular cardiomyopathy \(ARVC\)](#)
- [Focal adhesion](#)
- [Hypertrophic cardiomyopathy \(HCM\)](#)
- [Leukocyte transendothelial migration](#)
- [Pathogenic Escherichia coli infection - EHEC](#)
- [Regulation of actin cytoskeleton](#)
- [Tight junction](#)
- [Vibrio cholerae infection](#)

**Disease**

- [Breast cancer](#)
- [Breast Neoplasms](#)