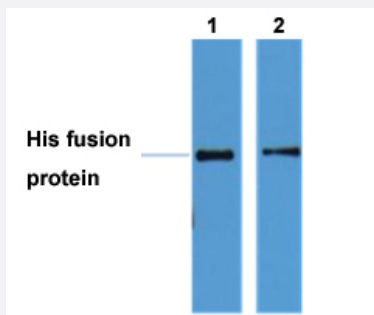


# His tag monoclonal antibody, clone 4E6

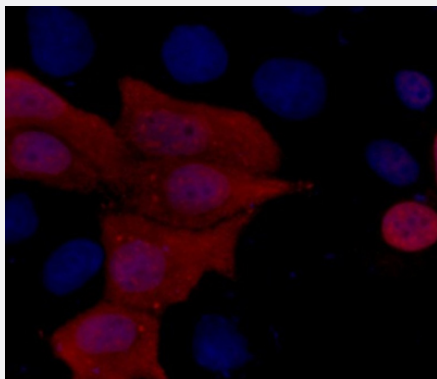
Catalog # MAB15243      Size 100 uL

## Applications



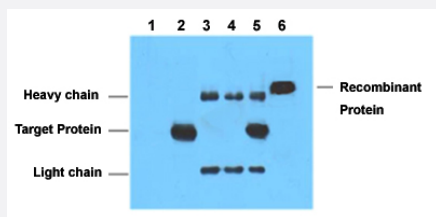
### Western Blot (Recombinant protein)

Western Blot analysis of 2 ug His fusion protein. Lane 1: At 1:5000 dilution, Lane 2: At 1:10000 dilution.



### Immunofluorescence

Immunofluorescence staining of 293 cells transfected with a His-tag protein using antibody (Red) and DAPI (Blue).



### Immunoprecipitation

Immunoprecipitation analysis of Lane 1: Untransfected 293 cell lysate, Lane 2: Transfected 293 cell lysate with His-tag fusion protein, Lane 3: IP (untransfected 293 + His tag monoclonal antibody, clone 4E6 + Protein G agarose), Lane 4: IP (transfected 293 + normal Mouse IgG + Protein G agarose), Lane 5: IP (transfected 293 + His tag monoclonal antibody, clone 4E6 + Protein G agarose), Lane 6: Recombinant protein (E.coli).

## Specification

### Product Description

Mouse monoclonal antibody raised against synthetic peptide of human His tag.

<b>Immunogen</b>	A synthetic peptide corresponding to full length human His tag.
<b>Host</b>	Mouse
<b>Specificity</b>	The antibody detects C-terminal, internal, and N-terminal His-tag fusion proteins.
<b>Form</b>	Liquid
<b>Purification</b>	Affinity purification
<b>Isotype</b>	IgG1
<b>Recommend Usage</b>	Immunofluorescence (1:1000) Immunoprecipitation (1:200) Western Blot (1:5000) The optimal working dilution should be determined by the end user.
<b>Storage Buffer</b>	In PBS (50% glycerol, 0.5% BSA, 0.02% sodium azide).
<b>Storage Instruction</b>	Store at -20°C. Aliquot to avoid repeated freezing and thawing.
<b>Note</b>	This product contains sodium azide: a POISONOUS AND HAZARDOUS SUBSTANCE which should be handled by trained staff only.

## Applications

- Western Blot (Recombinant protein)

Western Blot analysis of 2 ug His fusion protein. Lane 1: At 1:5000 dilution, Lane 2: At 1:10000 dilution.

- Immunofluorescence

Immunofluorescence staining of 293 cells transfected with a His-tag protein using antibody (Red) and DAPI (Blue).

- Immunoprecipitation

Immunoprecipitation analysis of Lane 1: Untransfected 293 cell lysate, Lane 2: Transfected 293 cell lysate with His-tag fusion protein, Lane 3: IP (untransfected 293 + His tag monoclonal antibody, clone 4E6 + Protein G agarose) , Lane 4: IP (transfected 293 + normal Mouse IgG + Protein G agarose), Lane 5: IP (transfected 293 + His tag monoclonal antibody, clone 4E6 + Protein G agarose), Lane 6: Recombinant protein (E.coli).