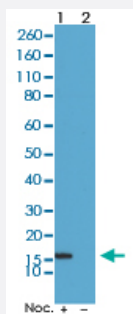


RecomAb™

# Histone H2B (phospho S14) monoclonal antibody, clone RM238

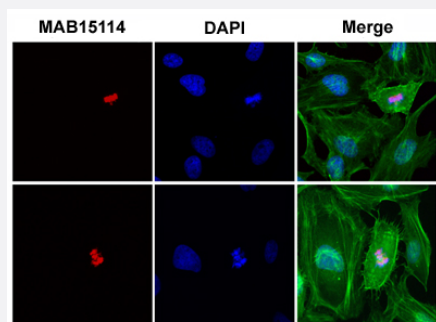
Catalog # MAB15114      Size 100 ug

## Applications



### Western Blot (Cell lysate)

Western Blot analysis of Lane 1: acid extracts of HeLa cell treated with Nocodazole and Lane 2: acid extracts of HeLa cell with Histone H2B (phospho S14) monoclonal antibody, clone RM238 (Cat # MAB15114) at 0.5 ug/mL working concentration.



### Immunocytochemistry

Immunocytochemistry staining of HeLa cells with Histone H2B (phospho S14) monoclonal antibody, clone RM238 (Cat # MAB15114) (Red) and DAPI (Blue). Actin filaments have been labeled with fluorescein phalloidin (Green).

## Specification

Product Description	Rabbit recombinant monoclonal antibody raised against of human histone H2B (S14).
Antibody Species	Rabbit
Immunogen	Original antibody is raised against a synthetic phosphopeptide corresponding to residues surrounding S14 of human Histone H2B.
Sequence	N/A
Reactivity	Human

Specificity	This antibody reacts to histone H2B only when phosphorylated at S14. No cross reactivity with other phosphorylated histones.
Form	Liquid
Purification	Protein A affinity purification
Isotype	IgG
Recommend Usage	ELISA (0.2-1 ug/mL) Immunocytochemistry (1-2 ug/mL) Multiplex (0.1-1 ug/mL) Western Blot (0.5-2 ug/mL) The optimal working dilution should be determined by the end user.
Storage Buffer	In PBS (50% glycerol, 1% BSA, 0.09% sodium azide)
Storage Instruction	Store at -20°C. Aliquot to avoid repeated freezing and thawing.
Note	This product contains sodium azide: a POISONOUS AND HAZARDOUS SUBSTANCE which should be handled by trained staff only.

## Applications

- Western Blot (Cell lysate)

Western Blot analysis of Lane 1: acid extracts of HeLa cell treated with Nocodazole and Lane 2: acid extracts of HeLa cell with Histone H2B (phospho S14) monoclonal antibody, clone RM238 (Cat # MAB15114) at 0.5 ug/mL working concentration.

- Immunocytochemistry

Immunocytochemistry staining of HeLa cells with Histone H2B (phospho S14) monoclonal antibody, clone RM238 (Cat # MAB15114) (Red) and DAPI (Blue). Actin filaments have been labeled with fluorescein phalloidin (Green).

- Enzyme-linked Immunoabsorbent Assay

## Gene Info — HIST1H2BB

Entrez GeneID	<a href="#">3018</a>
Protein Accession#	<a href="#">P33778</a>
Gene Name	HIST1H2BB
Gene Alias	H2B.1, H2B/f, H2BFF, MGC119804

Gene Description	histone cluster 1, H2bb
Omim ID	<a href="#">602803</a>
Gene Ontology	<a href="#">Hyperlink</a>
Gene Summary	<p>Histones are basic nuclear proteins that are responsible for the nucleosome structure of the chromosomal fiber in eukaryotes. Nucleosomes consist of approximately 146 bp of DNA wrapped around a histone octamer composed of pairs of each of the four core histones (H2A, H2B, H3, and H4). The chromatin fiber is further compacted through the interaction of a linker histone, H1, with the DNA between the nucleosomes to form higher order chromatin structures. This gene is intronless and encodes a member of the histone H2B family. Transcripts from this gene lack polyA tails; instead, they contain a palindromic termination element. This gene is found in the large histone gene cluster on chromosome 6p22-p21.3. [provided by RefSeq]</p>
Other Designations	H2B histone family, member F OTTHUMP00000016138 histone 1, H2bb

## Pathway

- [Systemic lupus erythematosus](#)