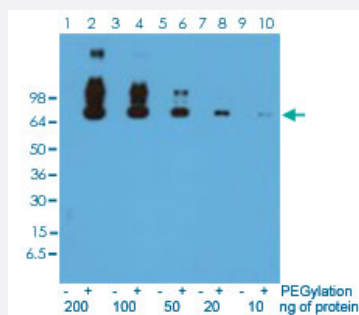


RecomAb™

Polyethylene glycol (methoxy group) monoclonal antibody, clone RM105 (Biotin)

Catalog # MAB14965 Size 50 ug

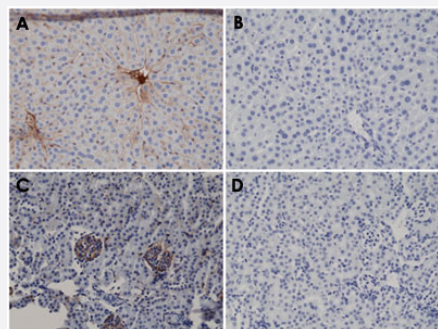
Applications



Western Blot

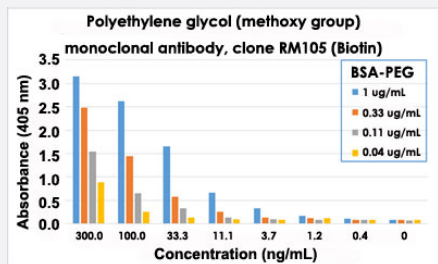
Western blot analysis of BSA and PEGylated BSA with Polyethylene glycol (methoxy group) monoclonal antibody, clone RM105 (Biotin) (Cat # MAB14965) at 0.1 ug/mL working concentration.

Immunohistochemistry (Formalin/PFA-fixed paraffin-embedded sections)



Enzyme-linked Immunoabsorbent Assay

ELISA analysis of different PEGylated BSA with Polyethylene glycol (methoxy group) monoclonal antibody, clone RM105 (Biotin) (Cat # MAB14965) at the following concentrations: 1 ug/mL, 0.33 ug/mL, 0.11 ug/mL, 0.04 ug/mL. The plate was coated with 50 uL/well different amounts of BSA-PEG. An alkaline phosphatase conjugated streptavidin as the secondary antibody.



Specification

Product Description	Rabbit recombinant monoclonal antibody raised against Polyethylene glycol (methoxy group).
Antibody Species	Rabbit
Immunogen	Original antibody is raised against polyethylene glycol (methoxy group) conjugated with KLH.
Sequence	N/A
Form	Liquid
Conjugation	Biotin
Purification	Protein A purification
Isotype	IgG
Recommend Usage	ELISA (0.02-0.5 ug/mL) Flow Cytometry Immunocytochemistry Immunohistochemistry (Formalin/PFA-fixed paraffin-embedded sections) (0.5-2 ug/mL) Immunoprecipitation Western Blotting (0.1-1 ug/mL) The optimal working dilution should be determined by the end user.
Storage Buffer	In PBS (50% glycerol, 1% BSA, 0.09% sodium azide)
Storage Instruction	Store at -20°C. Aliquot to avoid repeated freezing and thawing.
Note	This product contains sodium azide: a POISONOUS AND HAZARDOUS SUBSTANCE which should be handled by trained staff only.

Applications

- Western Blot

Western blot analysis of BSA and PEGylated BSA with Polyethylene glycol (methoxy group) monoclonal antibody, clone RM105 (Biotin) (Cat # MAB14965) at 0.1 ug/mL working concentration.

- Immunohistochemistry (Formalin/PFA-fixed paraffin-embedded sections)

Immunohistochemical staining (Formalin-fixed paraffin-embedded sections) of mouse liver (mouse had been injected with PEG-BSA for 3 hours) (A), mouse liver (mouse had been injected with BSA for 3 hours) (B), mouse kidney (mouse had been injected with PEG-BSA for 3 hours) (C), and mouse kidney (mouse had been injected with BSA for 3 hours) (D) using Polyethylene glycol (methoxy group) monoclonal antibody, clone RM105 (Biotin) (Cat # MAB14965).

- Immunocytochemistry

- Immunoprecipitation

- Enzyme-linked Immunoabsorbent Assay

ELISA analysis of different PEGylated BSA with Polyethylene glycol (methoxy group) monoclonal antibody, clone RM105 (Biotin) (Cat # MAB14965) at the following concentrations: 1 ug/mL, 0.33 ug/mL, 0.11 ug/mL, 0.04 ug/mL. The plate was coated with 50 uL/well different amounts of BSA-PEG. An alkaline phosphatase conjugated streptavidin as the secondary antibody.

- Flow Cytometry