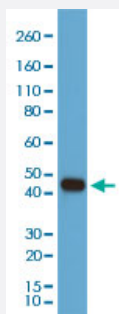


RecomAb™

# ACTB monoclonal antibody, clone RM112 (Biotin)

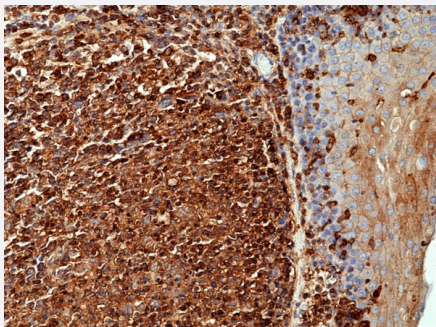
Catalog # MAB14962      Size 50 uL

## Applications



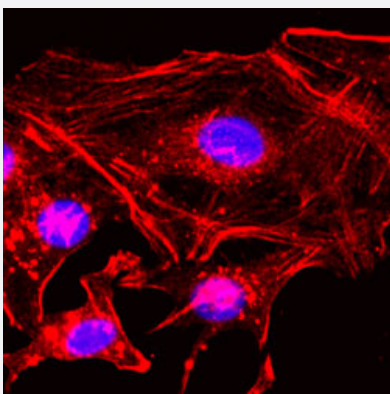
### Western Blot (Cell lysate)

Western blot analysis of A431 cell lysate with ACTB monoclonal antibody, clone RM112 (Biotin) (Cat # MAB14962) at 1:1000 dilution.



### Immunohistochemistry

Immunohistochemical staining of formalin fixed and paraffin embedded human tonsil tissue using ACTB monoclonal antibody, clone RM112 (Biotin) (Cat# MAB14962) at a 1:1000 dilution.



### Immunocytochemistry

Immunocytochemistry staining of HeLa cells with ACTB monoclonal antibody, clone RM112 (Biotin) (Cat # MAB14962) (Red) at 1:200 dilution. Blue: DAPI was used to stain the cell nuclei.

## Specification

Product Description	Rabbit recombinant monoclonal antibody raised against of ACTB.
Antibody Species	Rabbit
Immunogen	Original antibody is raised against a synthetic peptide corresponding to N-terminus of human ACTB.
Sequence	N/A
Form	Liquid
Conjugation	Biotin
Purification	Protein A purification
Isotype	IgG
Recommend Usage	ChIP (1:200) ELISA Flow Cytometry Immunocytochemistry (1:200) Immunohistochemistry (1:200) Immunoprecipitation (1:200) Western Blotting (1:1000) The optimal working dilution should be determined by the end user.
Storage Buffer	In PBS (50% glycerol, 1% BSA, 0.09% sodium azide)
Storage Instruction	Store at -20°C. Aliquot to avoid repeated freezing and thawing.
Note	This product contains sodium azide: a POISONOUS AND HAZARDOUS SUBSTANCE which should be handled by trained staff only.

## Applications

- ChIP

- Western Blot (Cell lysate)

Western blot analysis of A431 cell lysate with ACTB monoclonal antibody, clone RM112 (Biotin) (Cat # MAB14962) at 1:1000 dilution.

- Immunohistochemistry

- Immunohistochemistry

Immunohistochemical staining of formalin fixed and paraffin embedded human tonsil tissue using ACTB monoclonal antibody, clone RM112 (Biotin) (Cat# MAB14962) at a 1:1000 dilution.

- Immunocytochemistry

Immunocytochemistry staining of HeLa cells with ACTB monoclonal antibody, clone RM112 (Biotin) (Cat # MAB14962) (Red) at 1:200 dilution. Blue: DAPI was used to stain the cell nuclei.

- Immunoprecipitation

- Enzyme-linked Immunoabsorbent Assay

- Flow Cytometry

## Gene Info — ACTB

Entrez GeneID [60](#)

Protein Accession# [P60709](#)

Gene Name ACTB

Gene Alias PS1TP5BP1

Gene Description actin, beta

Omim ID [102630](#)

Gene Ontology [Hyperlink](#)

**Gene Summary** This gene encodes one of six different actin proteins. Actins are highly conserved proteins that are involved in cell motility, structure, and integrity. This actin is a major constituent of the contractile apparatus and one of the two nonmuscle cytoskeletal actins. [provided by RefSeq]

**Other Designations** PS1TP5-binding protein 1|actin, cytoplasmic 1|beta actin|beta cytoskeletal actin

## Pathway

- [Adherens junction](#)
- [Arrhythmogenic right ventricular cardiomyopathy \(ARVC\)](#)
- [Focal adhesion](#)
- [Hypertrophic cardiomyopathy \(HCM\)](#)
- [Leukocyte transendothelial migration](#)

- [Pathogenic Escherichia coli infection - EHEC](#)
- [Regulation of actin cytoskeleton](#)
- [Tight junction](#)
- [Vibrio cholerae infection](#)

## Disease

- [Breast cancer](#)
- [Breast Neoplasms](#)