

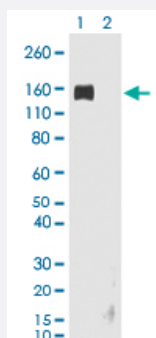
RecomAb™

# Rabbit IgG Fc monoclonal antibody, clone RMG02 (Biotin)

Catalog # MAB14944

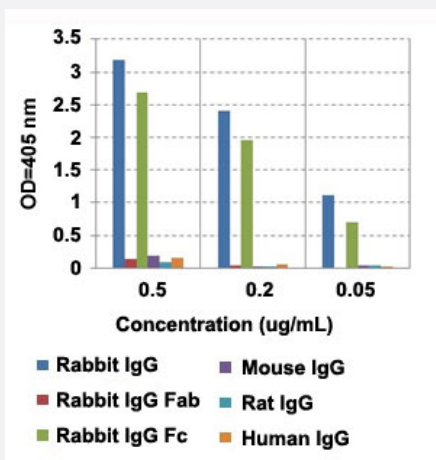
Size 50 ug

## Applications



### Western Blot

Western blot analysis of Lane 1: nonreduced (-) and Lane 2: reduced (+) rabbit IgG (20 ng/lane) with Rabbit IgG Fc monoclonal antibody, clone RMG02 (Biotin) (Cat # MAB14944) at 0.2 ug/mL working concentration. This antibody reacted to nonreduced rabbit IgG (~150 kDa).



### Enzyme-linked Immunoabsorbent Assay

ELISA analysis of IgG from different species with Rabbit IgG Fc monoclonal antibody, clone RMG02 (Cat # MAB12774) at the following concentrations: 0.5 ug/mL, 0.2 ug/mL, and 0.05 ug/mL. The plate was coated with 50 ng/well of different IgG and the result shows this antibody reacts to the Fc region of rabbit IgG; no cross reactivity with human IgG, rat IgG, or mouse IgG. An alkaline phosphatase conjugated anti-goat IgG as the secondary antibody.

### Enzyme-linked Immunoabsorbent Assay

A titer ELISA of rabbit IgG. The plate was coated with different amounts of rabbit IgG. A serial dilution of Rabbit IgG Fc monoclonal antibody, clone RMG02 (Biotin) (Cat# MAB14944) was used as the primary antibody. An alkaline phosphatase conjugated anti-goat IgG as the secondary antibody.

## Specification

|                            |  |
|----------------------------|--|
| <b>Product Description</b> | Goat recombinant monoclonal antibody raised against rabbit IgG Fc.   |
| <b>Antibody Species</b>    | Goat   |
| <b>Immunogen</b>           | Original antibody is raised against rabbit IgG.  |
| <b>Sequence</b>            | N/A  |
| <b>Reactivity</b>          | Rabbit   |
| <b>Form</b>                | Liquid   |
| <b>Conjugation</b>         | Biotin   |
| <b>Purification</b>        | Protein G purification   |
| <b>Isotype</b>             | IgG  |
| <b>Recommend Usage</b>     | ELISA (0.01-0.5 ug/mL)<br>Flow Cytometry<br>Immunocytochemistry (0.5-2 ug/mL)<br>Immunohistochemistry (0.5-2 ug/mL)<br>Immunoprecipitation<br>Western Blotting (0.1-0.5 ug/mL)<br>The optimal working dilution should be determined by the end user. |
| <b>Storage Buffer</b>      | In PBS (50% glycerol, 1% BSA, 0.09% sodium azide)  |
| <b>Storage Instruction</b> | Store at -20°C.<br>Aliquot to avoid repeated freezing and thawing.   |
| <b>Note</b>                | This product contains sodium azide: a POISONOUS AND HAZARDOUS SUBSTANCE which should be handled by trained staff only.   |

## Applications

- Western Blot

Western blot analysis of Lane 1: nonreduced (-) and Lane 2: reduced (+) rabbit IgG (20 ng/lane) with Rabbit IgG Fc monoclonal antibody, clone RMG02 (Biotin) (Cat # MAB14944) at 0.2 ug/mL working concentration. This antibody reacted to nonreduced rabbit IgG (~150 kDa).

- Immunohistochemistry

- Immunocytochemistry

- Immunoprecipitation

- Enzyme-linked Immunoabsorbent Assay

ELISA analysis of IgG from different species with Rabbit IgG Fc monoclonal antibody, clone RMG02 (Cat # MAB12774) at the following concentrations: 0.5 ug/mL, 0.2 ug/mL, and 0.05 ug/mL. The plate was coated with 50 ng/well of different IgG and the result shows this antibody reacts to the Fc region of rabbit IgG; no cross reactivity with human IgG, rat IgG, or mouse IgG. An alkaline phosphatase conjugated anti-goat IgG as the secondary antibody.

- Enzyme-linked Immunoabsorbent Assay

A titer ELISA of rabbit IgG. The plate was coated with different amounts of rabbit IgG. A serial dilution of Rabbit IgG Fc monoclonal antibody, clone RMG02 (Biotin) (Cat# MAB14944) was used as the primary antibody. An alkaline phosphatase conjugated anti-goat IgG as the secondary antibody.

- Flow Cytometry