

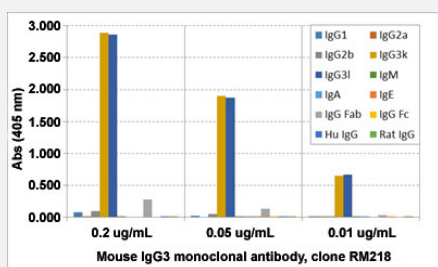
RecomAb™

## Mouse IgG3 monoclonal antibody, clone RM218 (Biotin)

Catalog # MAB14939

Size 50 ug

### Applications



### Enzyme-linked Immunoabsorbent Assay

ELISA analysis of Mouse IgG3 monoclonal antibody, clone RM218 (Cat # MAB12770) at the following concentrations: 0.2 ug/mL, 0.05 ug/mL, and 0.01 ug/mL. The plate was coated with 50 ng/well of different immunoglobulins and the result shows this antibody reacts to both mouse IgG3 (kappa) and IgG3 (lambda); No cross reactivity with mouse IgG1, IgG2a, IgG2b, IgM, IgA, IgE, human IgG, or rat IgG. An alkaline phosphatase conjugated anti-rabbit IgG as the secondary antibody.

### Enzyme-linked Immunoabsorbent Assay

A titer ELISA of mouse IgG3. The plate was coated with different amounts of mouse IgG3. A serial dilution of Mouse IgG3 monoclonal antibody, clone RM218 (Biotin) (Cat# MAB14939) was used as the primary antibody. An alkaline phosphatase conjugated anti-rabbit IgG as the secondary antibody.

### Specification

Product Description	Rabbit recombinant monoclonal antibody raised against mouse IgG3.
Antibody Species	Rabbit
Immunogen	Original antibody is raised against mouse IgG3.
Sequence	N/A
Reactivity	Mouse
Form	Liquid

Conjugation	Biotin
Purification	Protein A purification
Isotype	IgG
Recommend Usage	ELISA (0.005-0.2 ug/mL) Flow Cytometry Immunocytochemistry (0.5-2 ug/mL) Immunohistochemistry (0.5-2 ug/mL) Immunoprecipitation Western Blotting (0.1-0.5 ug/mL) The optimal working dilution should be determined by the end user.
Storage Buffer	In PBS (50% glycerol, 1% BSA, 0.09% sodium azide)
Storage Instruction	Store at -20°C. Aliquot to avoid repeated freezing and thawing.
Note	This product contains sodium azide: a POISONOUS AND HAZARDOUS SUBSTANCE which should be handled by trained staff only.

## Applications

- Western Blot
- Immunohistochemistry
- Immunocytochemistry
- Immunoprecipitation
- Enzyme-linked Immunoabsorbent Assay

ELISA analysis of Mouse IgG3 monoclonal antibody, clone RM218 (Cat # MAB12770) at the following concentrations: 0.2 ug/mL, 0.05 ug/mL, and 0.01 ug/mL. The plate was coated with 50 ng/well of different immunoglobulins and the result shows this antibody reacts to both mouse IgG3 (kappa) and IgG3 (lambda); No cross reactivity with mouse IgG1, IgG2a, IgG2b, IgM, IgA, IgE, human IgG, or rat IgG. An alkaline phosphatase conjugated anti-rabbit IgG as the secondary antibody.

- Enzyme-linked Immunoabsorbent Assay

A titer ELISA of mouse IgG3. The plate was coated with different amounts of mouse IgG3. A serial dilution of Mouse IgG3 monoclonal antibody, clone RM218 (Biotin) (Cat# MAB14939) was used as the primary antibody. An alkaline phosphatase conjugated anti-rabbit IgG as the secondary antibody.

- Flow Cytometry

## Gene Info — AI324046

Entrez GeneID	<a href="#">380795</a>
---------------	------------------------

Protein Accession#	<a href="#">P03987</a>
--------------------	------------------------

Gene Name	AI324046
-----------	----------

Gene Alias	IGHG3, IgG3, MGC68300
------------	-----------------------

Gene Description	expressed sequence AI324046
------------------	-----------------------------

Gene Ontology	<a href="#">Hyperlink</a>
---------------	---------------------------

Other Designations	-
--------------------	---