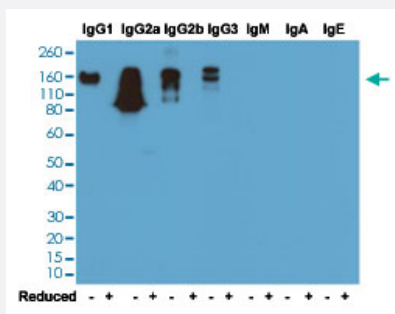


RecomAb™

Mouse IgG monoclonal antibody, clone RM104 (Biotin)

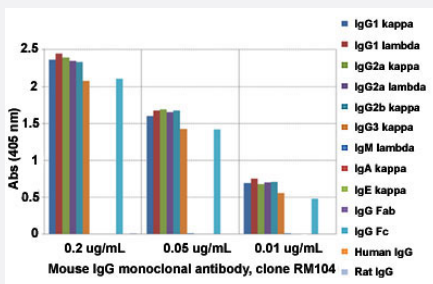
Catalog # MAB14934 Size 50 ug

Applications



Western Blot

Western blot analysis of nonreduced (-) and reduced (+) mouse immunoglobulins (20 ng/lane) with Mouse IgG monoclonal antibody, clone RM104 (Biotin) (Cat # MAB14934) at 0.2 ug/mL working concentration. This antibody reacts to nonreduced mouse IgG1, IgG2a, IgG2b, and IgG3. It showed no cross reactivity with IgM, IgA, or IgE.



Enzyme-linked Immunoabsorbent Assay

ELISA analysis of Mouse IgG monoclonal antibody, clone RM104 (Cat # MAB12765) at the following concentrations: 0.2 ug/mL, 0.05 ug/mL, and 0.01 ug/mL. The plate was coated with 50 ng/well of different immunoglobulins and the result shows this antibody reacts to the Fc region of mouse IgG1, IgG2a, IgG2b, and IgG3; no cross reactivity with IgM, IgA, IgE, human or rat IgG. An alkaline phosphatase conjugated anti-rabbit IgG as the secondary antibody.

Enzyme-linked Immunoabsorbent Assay

A titer ELISA of mouse IgG. The plate was coated with different amounts of mouse IgG. A serial dilution of Mouse IgG monoclonal antibody, clone RM104 (Biotin) (Cat# MAB14934)4 was used as the primary antibody. An alkaline phosphatase conjugated anti-rabbit IgG as the secondary antibody.

Specification

Product Description

Rabbit recombinant monoclonal antibody raised against mouse IgG.

Antibody Species	Rabbit
Immunogen	Original antibody is raised against mouse IgG.
Sequence	N/A
Reactivity	Mouse
Form	Liquid
Conjugation	Biotin
Purification	Protein A purification
Isotype	IgG
Recommend Usage	ELISA (0.005-0.2 ug/mL) Flow Cytometry Immunocytochemistry (0.5-2 ug/mL) Immunohistochemistry (0.5-2 ug/mL) Immunoprecipitation Western Blotting (0.1-0.5 ug/mL) The optimal working dilution should be determined by the end user.
Storage Buffer	In PBS (50% glycerol, 1% BSA, 0.09% sodium azide)
Storage Instruction	Store at -20°C. Aliquot to avoid repeated freezing and thawing.
Note	This product contains sodium azide: a POISONOUS AND HAZARDOUS SUBSTANCE which should be handled by trained staff only.

Applications

- Western Blot

Western blot analysis of nonreduced (-) and reduced (+) mouse immunoglobulins (20 ng/lane) with Mouse IgG monoclonal antibody, clone RM104 (Biotin) (Cat # MAB14934) at 0.2 ug/mL working concentration. This antibody reacts to nonreduced mouse IgG1, IgG2a, IgG2b, and IgG3. It showed no cross reactivity with IgM, IgA, or IgE.

- Immunohistochemistry

- Immunocytochemistry

- Immunoprecipitation

- Enzyme-linked Immunoabsorbent Assay

ELISA analysis of Mouse IgG monoclonal antibody, clone RM104 (Cat # MAB12765) at the following concentrations: 0.2 ug/mL, 0.05 ug/mL, and 0.01 ug/mL. The plate was coated with 50 ng/well of different immunoglobulins and the result shows this antibody reacts to the Fc region of mouse IgG1, IgG2a, IgG2b, and IgG3; no cross reactivity with IgM, IgA, IgE, human or rat IgG. An alkaline phosphatase conjugated anti-rabbit IgG as the secondary antibody.

- Enzyme-linked Immunoabsorbent Assay

A titer ELISA of mouse IgG. The plate was coated with different amounts of mouse IgG. A serial dilution of Mouse IgG monoclonal antibody, clone RM104 (Biotin) (Cat# MAB14934)4 was used as the primary antibody. An alkaline phosphatase conjugated anti-rabbit IgG as the secondary antibody.

- Flow Cytometry

Gene Info — Ighg1

Entrez GeneID	16017
---------------	-----------------------

Protein Accession#	P01868
--------------------	------------------------

Gene Name	Ighg1
-----------	-------

Gene Alias	IgG1, Igh-4, VH7183
------------	---------------------

Gene Description	immunoglobulin heavy constant gamma 1 (G1m marker)
------------------	--

Gene Ontology	Hyperlink
---------------	---------------------------

Other Designations	-
--------------------	---