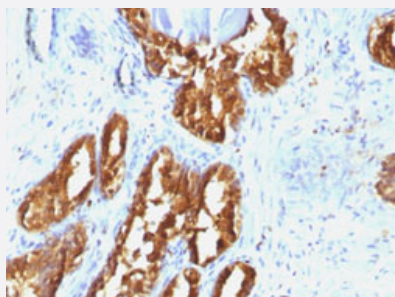


ACPP monoclonal antibody, clone ACPP/1338

Catalog # MAB14881 Size 100 ug

Applications



Immunohistochemistry (Formalin/PFA-fixed paraffin-embedded sections)

Immunohistochemical staining (Formalin-fixed paraffin-embedded sections) of human prostate carcinoma with ACPP monoclonal antibody, clone ACPP/1338 (Cat # MAB14881).

Specification

Product Description	Mouse monoclonal antibody raised against full length recombinant human ACPP.
Immunogen	Recombinant protein corresponding to full length human ACPP.
Host	Mouse
Theoretical MW (kDa)	52
Reactivity	Human
Form	Liquid
Purification	Protein A/G purification
Isotype	IgG1, kappa
Recommend Usage	Flow Cytometry (0.5-1 ug/10 ⁶ cells) Immunofluorescence (0.5-1 ug/mL) Immunohistochemistry (Formalin/PFA-fixed paraffin-embedded sections) (0.5-1 ug/mL) The optimal working dilution should be determined by the end user.
Storage Buffer	In 10 mM PBS (0.05% BSA, 0.05% sodium azide).

Storage Instruction

Store at 4°C.

Note

This product contains sodium azide: a POISONOUS AND HAZARDOUS SUBSTANCE which should be handled by trained staff only.

Applications

- Immunohistochemistry (Formalin/PFA-fixed paraffin-embedded sections)

Immunohistochemical staining (Formalin-fixed paraffin-embedded sections) of human prostate carcinoma with ACP3 monoclonal antibody, clone ACP3/1338 (Cat # MAB14881).

- Immunofluorescence

- Flow Cytometry

Gene Info — ACP3

Entrez GeneID[55](#)**Protein Accession#**[P15309](#)**Gene Name**

ACP3

Gene Alias

ACP-3, ACP3, PAP

Gene Description

acid phosphatase, prostate

Omim ID[171790](#)**Gene Ontology**[Hyperlink](#)**Gene Summary**

This gene encodes an enzyme that catalyzes the conversion of orthophosphoric monoester to alcohol and orthophosphate. It is synthesized under androgen regulation and is secreted by the epithelial cells of the prostate gland. An alternatively spliced transcript variant encoding a longer isoform has been found for this gene. This isoform contains a transmembrane domain and is localized in the plasma membrane-endosomal-lysosomal pathway. [provided by RefSeq]

Other Designations

prostatic acid phosphatase

Publication Reference

- [A novel hybridoma antibody \(PASE/4LJ\) to human prostatic acid phosphatase suitable for immunohistochemistry.](#)

Haines AM, Larkin SE, Richardson AP, Stirling RW, Heyderman E.

British Journal of Cancer 1989 Dec; 60(6):887.

Pathway

- [gamma-Hexachlorocyclohexane degradation](#)
- [Riboflavin metabolism](#)

Disease

- [Tobacco Use Disorder](#)