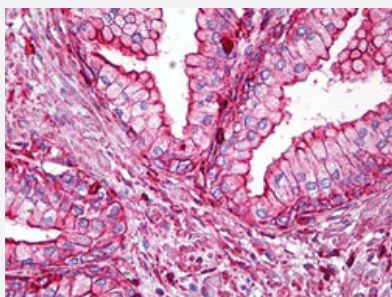


ACTB monoclonal antibody, clone BA3R

Catalog # MAB12983 Size 50 ug

Applications



Immunohistochemistry (Formalin/PFA-fixed paraffin-embedded sections)

Immunohistochemical staining (Formalin-fixed paraffin-embedded sections) of human prostate with ACTB monoclonal antibody, clone BA3R (Cat # MAB12983) at 5 ug/mL working concentration.

Specification

Product Description	Mouse monoclonal antibody raised against synthetic peptide of human ACTB.
Immunogen	A synthetic peptide (conjugated with KLH) corresponding to N-terminus region of human ACTB.
Host	Mouse
Theoretical MW (kDa)	40
Reactivity	Human
Form	Liquid
Purification	Affinity purification
Isotype	IgG2b
Recommend Usage	ELISA Immunohistochemistry (Formalin/PFA-fixed paraffin-embedded sections) (5 ug/mL) Western Blot (1:1000-1:10000) The optimal working dilution should be determined by the end user.
Storage Buffer	In PBS, pH 7.4 (0.05% sodium azide).

Storage Instruction

Store at 4°C. For long term storage store at -20°C.
Aliquot to avoid repeated freezing and thawing.

Note

This product contains sodium azide: a POISONOUS AND HAZARDOUS SUBSTANCE which should be handled by trained staff only.

Applications

- Western Blot
- Immunohistochemistry (Formalin/PFA-fixed paraffin-embedded sections)
Immunohistochemical staining (Formalin-fixed paraffin-embedded sections) of human prostate with ACTB monoclonal antibody, clone BA3R (Cat # MAB12983) at 5 ug/mL working concentration.
- Enzyme-linked Immunoabsorbent Assay

Gene Info — ACTB

Entrez GeneID [60](#)

Protein Accession# [P60709](#)

Gene Name ACTB

Gene Alias PS1TP5BP1

Gene Description actin, beta

Omim ID [102630](#)

Gene Ontology [Hyperlink](#)

Gene Summary This gene encodes one of six different actin proteins. Actins are highly conserved proteins that are involved in cell motility, structure, and integrity. This actin is a major constituent of the contractile apparatus and one of the two nonmuscle cytoskeletal actins. [provided by RefSeq]

Other Designations PS1TP5-binding protein 1|actin, cytoplasmic 1|beta actin|beta cytoskeletal actin

Publication Reference

- [p38 predicts depression and poor outcome in esophageal cancer.](#)

Cheng Y, Qiao Z, Dang C, Zhou B, Li S, Zhang W, Jiang J, Song Y, Zhang J, Diao D.

Oncology Letters 2017 Dec; 4(6):7241.

Application: WB-Ce, Human, Eca-109, TE-1 cells

Pathway

- [Adherens junction](#)
- [Arrhythmogenic right ventricular cardiomyopathy \(ARVC\)](#)
- [Focal adhesion](#)
- [Hypertrophic cardiomyopathy \(HCM\)](#)
- [Leukocyte transendothelial migration](#)
- [Pathogenic Escherichia coli infection - EHEC](#)
- [Regulation of actin cytoskeleton](#)
- [Tight junction](#)
- [Vibrio cholerae infection](#)

Disease

- [Breast cancer](#)
- [Breast Neoplasms](#)