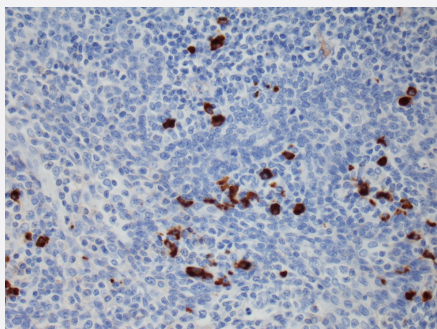


RecomAb™

# Human IgG1 monoclonal antibody, clone RM117

Catalog # MAB12818      Size 100 ug

## Applications



### Immunohistochemistry

Immunohistochemical staining of FFPE Tonsil tissue sections using Anti-Human IgG1 antibody Human IgG1 monoclonal antibody, clone RM117 (Cat# MAB12818) at a 1:15,000 dilution.

### Enzyme-linked Immunoabsorbent Assay

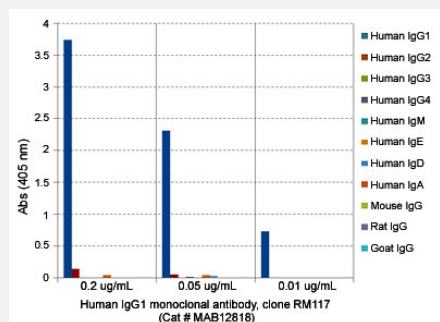
ELISA showing Human IgG1 monoclonal antibody, clone RM117 (Cat# MAB12818) does not react to monkey IgG. The plate was coated with Rhesus monkey IgG. A serial dilution of Cat# MAB12818 and a monkey IgG binding antibody (positive control) was used as the detection antibody.

### Enzyme-linked Immunoabsorbent Assay

Sandwich ELISA using Human IgG1 monoclonal antibody, clone RM117 (Cat# MAB12818) as the capture antibody, and Human Ig light chain monoclonal antibody, clone RM129 (Biotin) (Cat# MAB12811) as the detection antibody, followed by an AP conjugated streptavidin.

### Enzyme-linked Immunoabsorbent Assay

A titer ELISA using Human IgG1 monoclonal antibody, clone RM117 (Cat# MAB12818). The plate was coated with different amounts of human IgG1. A serial dilution of Cat# MAB12818 was used as the primary antibody, followed by an alkaline phosphatase conjugated anti-rabbit IgG as the secondary antibody.



## Enzyme-linked Immunoabsorbent Assay

ELISA analysis of Human IgG1 monoclonal antibody, clone RM117 (Cat # MAB12818) at the following concentrations: 0.2 ug/mL, 0.05 ug/mL, 0.01 ug/mL. The plate was coated with 50 ng/well of different immunoglobulins and the result shows this antibody reacts to human IgG1; no cross reactivity human IgG2, IgG3, IgG4, IgE, IgA, or IgD, mouse IgG, rat IgG, or goat IgG. An alkaline phosphatase conjugated anti-rabbit IgG as the secondary antibody.

## Enzyme-linked Immunoabsorbent Assay

Detection of human IgG1 in monkey serum, using Human IgG1 monoclonal antibody, clone RM117 (Cat# MAB12818) (capture) and Human Ig light chain monoclonal antibody, clone RM129 (Biotin) (Cat# MAB12811) (detection) as a Sandwich ELISA pair. HRP conjugated streptavidin and TMB were used to yield the colorimetric reaction.

## Specification

<b>Product Description</b>	Rabbit recombinant monoclonal antibody raised against of human IgG1.
<b>Antibody Species</b>	Rabbit
<b>Immunogen</b>	Original antibody is raised against a synthetic peptide corresponding to the hinge region of human Ig G1.
<b>Sequence</b>	N/A
<b>Reactivity</b>	Human
<b>Specificity</b>	This antibody reacts to the heavy chain of human IgG1. No cross reactivity with human IgG2, IgG3, Ig G4, IgM, IgA, IgD, IgE, mouse IgG, rat IgG, or goat IgG.
<b>Form</b>	Liquid
<b>Purification</b>	Protein A affinity purification
<b>Isotype</b>	IgG
<b>Recommend Usage</b>	ELISA (0.05-0.2 ug/mL for detection; 0.05-0.2 ug/well for capture) Flow Cytometry Immunocytochemistry (0.5-2 ug/mL) Immunohistochemistry (0.5-2 ug/mL) The optimal working dilution should be determined by the end user.

<b>Storage Buffer</b>	In PBS (50% glycerol, 1% BSA, 0.09% sodium azide)
<b>Storage Instruction</b>	Store at -20°C. Aliquot to avoid repeated freezing and thawing.
<b>Note</b>	This product contains sodium azide: a POISONOUS AND HAZARDOUS SUBSTANCE which should be handled by trained staff only.

## Applications

- Immunohistochemistry

- Immunohistochemistry

Immunohistochemical staining of FFPE Tonsil tissue sections using Anti-Human IgG1 antibody Human IgG1 monoclonal antibody, clone RM117 (Cat# MAB12818) at a 1:15,000 dilution.

- Immunocytochemistry

- Enzyme-linked Immunoabsorbent Assay

ELISA showing Human IgG1 monoclonal antibody, clone RM117 (Cat# MAB12818) does not react to monkey IgG. The plate was coated with Rhesus monkey IgG. A serial dilution of Cat# MAB12818 and a monkey IgG binding antibody (positive control) was used as the detection antibody.

- Enzyme-linked Immunoabsorbent Assay

Sandwich ELISA using Human IgG1 monoclonal antibody, clone RM117 (Cat# MAB12818) as the capture antibody, and Human Ig light chain monoclonal antibody, clone RM129 (Biotin) (Cat# MAB12811) as the detection antibody, followed by an AP conjugated streptavidin.

- Enzyme-linked Immunoabsorbent Assay

A titer ELISA using Human IgG1 monoclonal antibody, clone RM117 (Cat# MAB12818). The plate was coated with different amounts of human IgG1. A serial dilution of Cat# MAB12818 was used as the primary antibody, followed by an alkaline phosphatase conjugated anti-rabbit IgG as the secondary antibody.

- Enzyme-linked Immunoabsorbent Assay

ELISA analysis of Human IgG1 monoclonal antibody, clone RM117 (Cat # MAB12818) at the following concentrations: 0.2 ug/mL, 0.05 ug/mL, 0.01 ug/mL. The plate was coated with 50 ng/well of different immunoglobulins and the result shows this antibody reacts to human IgG1; no cross reactivity human IgG2, IgG3, IgG4, IgE, IgA, or IgD, mouse IgG, rat IgG, or goat IgG. An alkaline phosphatase conjugated anti-rabbit IgG as the secondary antibody.

- Enzyme-linked Immunoabsorbent Assay

Detection of human IgG1 in monkey serum, using Human IgG1 monoclonal antibody, clone RM117 (Cat# MAB12818) (capture) and Human Ig light chain monoclonal antibody, clone RM129 (Biotin) (Cat# MAB12811) (detection) as a Sandwich ELISA pair. HRP conjugated streptavidin and TMB were used to yield the colorimetric reaction.

- Flow Cytometry

## Gene Info — IGHG1

Entrez GeneID	<a href="#">3500</a>
Protein Accession#	<a href="#">P01857</a>
Gene Name	IGHG1
Gene Alias	-
Gene Description	immunoglobulin heavy constant gamma 1 (G1m marker)
Omim ID	<a href="#">147100</a>
Gene Ontology	<a href="#">Hyperlink</a>
Other Designations	-

## Disease

- [Asthma](#)
- [Crohn Disease](#)
- [Dermatomyositis](#)
- [Genetic Predisposition to Disease](#)
- [Helicobacter Infections](#)
- [Hypersensitivity](#)
- [Polymyositis](#)
- [Purpura](#)
- [Sarcoidosis](#)