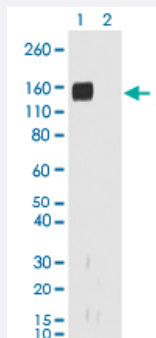


RecomAb™

Rabbit IgG Fab monoclonal antibody, clone RMG01

Catalog # MAB12773 Size 100 ug

Applications

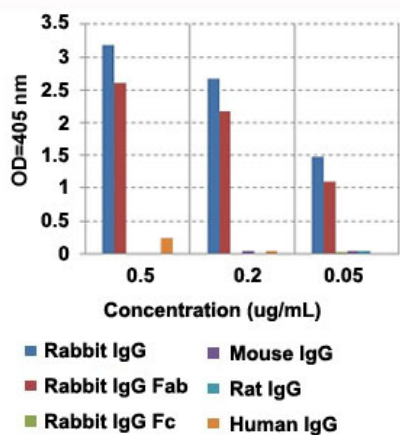


Western Blot

Western blot analysis of Lane 1: nonreduced (-) and Lane 2: reduced (+) rabbit IgG (20 ng/lane) with Rabbit IgG Fab monoclonal antibody, clone RMG01 (Cat # MAB12773) at 0.2 ug/mL working concentration. This antibody reacted to nonreduced rabbit IgG (~150 kDa).

Enzyme-linked Immunoabsorbent Assay

A titer ELISA of rabbit IgG. The plate was coated with different amounts of rabbit IgG. A serial dilution of Rabbit IgG Fab monoclonal antibody, clone RMG01 (Cat# MAB12773) was used as the primary antibody. An alkaline phosphatase conjugated anti-goat IgG as the secondary antibody.



Enzyme-linked Immunoabsorbent Assay

ELISA analysis of IgG from different species with Rabbit IgG Fab monoclonal antibody, clone RMG01 (Cat # MAB12773) at the following concentrations: 0.5 ug/mL, 0.2 ug/mL, and 0.05 ug/mL. The plate was coated with 50 ng/well of different IgG and the result shows this antibody reacts to the Fab region of rabbit IgG; no cross reactivity with human IgG, rat IgG, or mouse IgG. An alkaline phosphatase conjugated anti-goat IgG as the secondary antibody.

Specification

Product Description	Goat recombinant monoclonal antibody raised against rabbit IgG Fab.
Antibody Species	Goat
Immunogen	Original antibody is raised against rabbit IgG.
Sequence	N/A
Reactivity	Rabbit
Specificity	This antibody reacts to the Fab region of Rabbit IgG. No cross reactivity with human IgG, rat IgG, or mouse IgG
Form	Liquid
Purification	Protein G purification
Isotype	IgG
Recommend Usage	ELISA (0.01 ug/mL- 0.5 ug/mL) Flow Cytometry Immunocytochemistry (0.5 ug/mL-2 ug/mL) Immunohistochemistry (0.5 ug/mL-2 ug/mL) Immunoprecipitation Western Blot (0.1 ug/mL-0.5 ug/mL) The optimal working dilution should be determined by the end user.
Storage Buffer	In PBS (50% glycerol, 1% BSA, 0.09% sodium azide)
Storage Instruction	Store at -20°C. Aliquot to avoid repeated freezing and thawing.
Note	This product contains sodium azide: a POISONOUS AND HAZARDOUS SUBSTANCE which should be handled by trained staff only.

Applications

- Western Blot

Western blot analysis of Lane 1: nonreduced (-) and Lane 2: reduced (+) rabbit IgG (20 ng/lane) with Rabbit IgG Fab monoclonal antibody, clone RMG01 (Cat # MAB12773) at 0.2 ug/mL working concentration. This antibody reacted to nonreduced rabbit IgG (~150 kDa).

- Immunohistochemistry (Formalin/PFA-fixed paraffin-embedded sections)

- Immunocytochemistry

- Immunoprecipitation

- Enzyme-linked Immunoabsorbent Assay

A titer ELISA of rabbit IgG. The plate was coated with different amounts of rabbit IgG. A serial dilution of Rabbit IgG Fab monoclonal antibody, clone RMG01 (Cat# MAB12773) was used as the primary antibody. An alkaline phosphatase conjugated anti-goat IgG as the secondary antibody.

- Enzyme-linked Immunoabsorbent Assay

ELISA analysis of IgG from different species with Rabbit IgG Fab monoclonal antibody, clone RMG01 (Cat # MAB12773) at the following concentrations: 0.5 ug/mL, 0.2 ug/mL, and 0.05 ug/mL. The plate was coated with 50 ng/well of different IgG and the result shows this antibody reacts to the Fab region of rabbit IgG; no cross reactivity with human IgG, rat IgG, or mouse IgG. An alkaline phosphatase conjugated anti-goat IgG as the secondary antibody.

- Flow Cytometry