

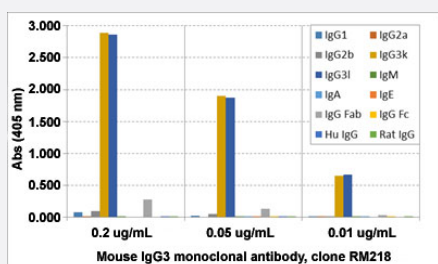
RecomAb™

Mouse IgG3 monoclonal antibody, clone RM218

Catalog # MAB12770

Size 100 ug

Applications



Enzyme-linked Immunoabsorbent Assay

ELISA analysis of Mouse IgG3 monoclonal antibody, clone RM218 (Cat # MAB12770) at the following concentrations: 0.2 ug/mL, 0.05 ug/mL, and 0.01 ug/mL. The plate was coated with 50 ng/well of different immunoglobulins and the result shows this antibody reacts to both mouse IgG3 (kappa) and IgG3 (lambda); No cross reactivity with mouse IgG1, IgG2a, IgG2b, IgM, IgA, IgE, human IgG, or rat IgG. An alkaline phosphatase conjugated anti-rabbit IgG as the secondary antibody.

Enzyme-linked Immunoabsorbent Assay

A titer ELISA of mouse IgG3. The plate was coated with different amounts of mouse IgG3. A serial dilution of Mouse IgG3 monoclonal antibody, clone RM218 (Cat# MAB12770) was used as the primary antibody. An alkaline phosphatase conjugated anti-rabbit IgG as the secondary antibody.

Specification

Product Description	Rabbit recombinant monoclonal antibody raised against mouse IgG3.
Antibody Species	Rabbit
Immunogen	Original antibody is raised against mouse IgG3.
Sequence	N/A
Reactivity	Mouse

Specificity	This antibody reacts to the Fab region of mouse IgG3. No cross reactivity with mouse IgG1, IgG2a, IgG2b, IgM, IgA, IgE, human IgG, or rat IgG.
Form	Liquid
Purification	Protein A affinity purification
Isotype	IgG
Recommend Usage	ELISA (0.005 - 0.2 ug/mL) Flow Cytometry Immunocytochemistry (0.5 - 2 ug/mL) Immunohistochemistry (0.5 - 2 ug/mL) Immunoprecipitation Western Blot (0.1 - 0.5 ug/mL) The optimal working dilution should be determined by the end user.
Storage Buffer	In PBS (50% glycerol, 1% BSA, 0.09% sodium azide)
Storage Instruction	Store at -20°C. Aliquot to avoid repeated freezing and thawing.
Note	This product contains sodium azide: a POISONOUS AND HAZARDOUS SUBSTANCE which should be handled by trained staff only.

Applications

- Western Blot
- Immunohistochemistry
- Immunocytochemistry
- Immunoprecipitation
- Enzyme-linked Immunoabsorbent Assay

ELISA analysis of Mouse IgG3 monoclonal antibody, clone RM218 (Cat # MAB12770) at the following concentrations: 0.2 ug/mL, 0.05 ug/mL, and 0.01 ug/mL. The plate was coated with 50 ng/well of different immunoglobulins and the result shows this antibody reacts to both mouse IgG3 (kappa) and IgG3 (lambda); No cross reactivity with mouse IgG1, IgG2a, IgG2b, IgM, IgA, IgE, human IgG, or rat IgG. An alkaline phosphatase conjugated anti-rabbit IgG as the secondary antibody.

- Enzyme-linked Immunoabsorbent Assay

A titer ELISA of mouse IgG3. The plate was coated with different amounts of mouse IgG3. A serial dilution of Mouse IgG3 monoclonal antibody, clone RM218 (Cat# MAB12770) was used as the primary antibody. An alkaline phosphatase conjugated anti-rabbit IgG as the secondary antibody.

- Flow Cytometry

Gene Info — AI324046

Entrez GeneID	380795
---------------	------------------------

Protein Accession#	P03987
--------------------	------------------------

Gene Name	AI324046
-----------	----------

Gene Alias	IGHG3, IgG3, MGC68300
------------	-----------------------

Gene Description	expressed sequence AI324046
------------------	-----------------------------

Gene Ontology	Hyperlink
---------------	---------------------------

Other Designations	-
--------------------	---