

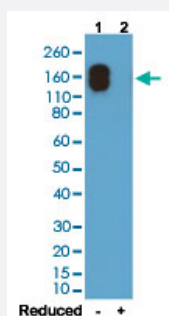
RecomAb™

Mouse IgG2a (kappa) monoclonal antibody, clone RM107

Catalog # MAB12767

Size 100 ug

Applications



Western Blot

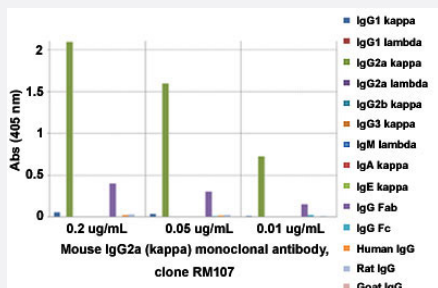
Western blot analysis of Lane 1: nonreduced (-) and Lane 2: reduced (+) mouse IgG2a (kappa) (20 ng/lane) with Mouse IgG2a (kappa) monoclonal antibody, clone RM107 (Cat # MAB12767) under 0.2 ug/mL working concentration. This antibody only reacts to nonreduced mouse IgG2a (kappa).

Enzyme-linked Immunoabsorbent Assay

A titer ELISA of mouse IgG2ak. The plate was coated with different amounts of mouse IgG2ak. A serial dilution of Mouse IgG2a (kappa) monoclonal antibody, clone RM107 (Cat# MAB12767) was used as the primary antibody. An alkaline phosphatase conjugated anti- rabbit IgG as the secondary antibody.

Enzyme-linked Immunoabsorbent Assay

ELISA analysis of Mouse IgG2a (kappa) monoclonal antibody, clone RM107 (Cat # MAB12767) at the following concentrations: 0.2 ug/mL, 0.05 ug/mL, and 0.01 ug/mL. The plate was coated with 50 ng/well of different immunoglobulins and the result shows this antibody reacts to the Fab region of mouse IgG2a (kappa); no cross reactivity with IgG2a (lambda), IgG1, IgG3, IgM, IgA, IgE, human IgG, rat IgG, or goat IgG. An alkaline phosphatase conjugated anti- rabbit IgG as the secondary antibody.



Specification

Product Description

Rabbit recombinant monoclonal antibody raised against mouse IgG2a (kappa).

Antibody Species	Rabbit
Immunogen	Original antibody is raised against mouse IgG.
Sequence	N/A
Reactivity	Mouse
Specificity	This antibody reacts to the Fab region of mouse IgG2a. No cross reactivity with mouse IgG2a, IgG1, IgG3, IgM, IgA, IgE, human IgG, rat IgG, or goat IgG.
Form	Liquid
Purification	Protein A affinity purification
Isotype	IgG
Recommend Usage	ELISA (0.005 - 0.2 ug/mL) Flow Cytometry Immunocytochemistry (0.5 - 2 ug/mL) Immunohistochemistry (0.5 - 2 ug/mL) Immunoprecipitation Western Blot (0.1 - 0.5 ug/mL) The optimal working dilution should be determined by the end user.
Storage Buffer	In PBS (50% glycerol, 1% BSA, 0.09% sodium azide)
Storage Instruction	Store at -20°C. Aliquot to avoid repeated freezing and thawing.
Note	This product contains sodium azide: a POISONOUS AND HAZARDOUS SUBSTANCE which should be handled by trained staff only.

Applications

- Western Blot

Western blot analysis of Lane 1: nonreduced (-) and Lane 2: reduced (+) mouse IgG2a (kappa) (20 ng/lane) with Mouse IgG2a (kappa) monoclonal antibody, clone RM107 (Cat # MAB12767) under 0.2 ug/mL working concentration. This antibody only reacts to nonreduced mouse IgG2a (kappa).

- Immunohistochemistry

- Immunocytochemistry

- Immunoprecipitation

- Enzyme-linked Immunoabsorbent Assay

A titer ELISA of mouse IgG2 α k. The plate was coated with different amounts of mouse IgG2 α k. A serial dilution of Mouse IgG2 α (kappa) monoclonal antibody, clone RM107 (Cat# MAB12767) was used as the primary antibody. An alkaline phosphatase conjugated anti- rabbit IgG as the secondary antibody.

- Enzyme-linked Immunoabsorbent Assay

ELISA analysis of Mouse IgG2 α (kappa) monoclonal antibody, clone RM107 (Cat # MAB12767) at the following concentrations: 0.2 ug/mL, 0.05 ug/mL, and 0.01 ug/mL. The plate was coated with 50 ng/well of different immunoglobulins and the result shows this antibody reacts to the Fab region of mouse IgG2 α (kappa); no cross reactivity with IgG2 α (lambda), IgG1, IgG3, IgM, IgA, IgE, human IgG, rat IgG, or goat IgG. An alkaline phosphatase conjugated anti-rabbit IgG as the secondary antibody.

- Flow Cytometry

Gene Info — Igh-1a

Entrez GeneID	380793
---------------	------------------------

Protein Accession#	P01863
--------------------	------------------------

Gene Name	Igh-1a
-----------	--------

Gene Alias	1810060O09Rik, IGHG2A, Igh-1, MGC102662, MGC118125, MGC18977
------------	--

Gene Description	immunoglobulin heavy chain 1a (serum IgG2a)
------------------	---

Gene Ontology	Hyperlink
---------------	---------------------------

Other Designations	-
--------------------	---