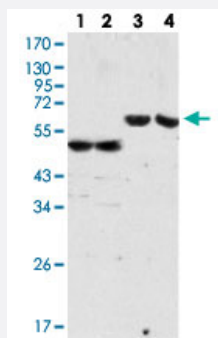


ALB monoclonal antibody, clone 8F6F9

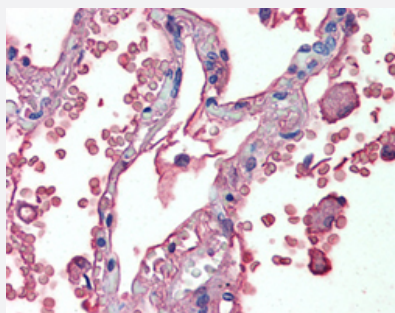
Catalog # MAB12612 Size 50 uL

Applications



Western Blot

Western blot analysis of Lane 1,3: human serum, Lane 2, 4: plasma, Lane 1, 2: human IgG mouse monoclonal antibody and Lane 3, 4: ALB monoclonal antibody, clone 8F6F9 (Cat # MAB12612).



Immunohistochemistry (Formalin/PFA-fixed paraffin-embedded sections)

Immunohistochemical staining (Formalin-fixed paraffin-embedded sections) of human lung with ALB monoclonal antibody, clone 8F6F9 (Cat # MAB12612) at 1:200 dilution.

Specification

Product Description	Mouse monoclonal antibody raised against human ALB.
Immunogen	Human ALB
Host	Mouse
Reactivity	Human
Form	Liquid
Isotype	IgG1

Recommend Usage	ELISA (1:10000) Immunohistochemistry (Formalin/PFA-fixed paraffin-embedded sections) (1:200) Western Blot (1:500-1:2000) The optimal working dilution should be determined by the end user.
Storage Buffer	In ascites (0.03% sodium azide).
Storage Instruction	Store at 4°C. For long term storage store at -20°C. Aliquot to avoid repeated freezing and thawing.
Note	This product contains sodium azide: a POISONOUS AND HAZARDOUS SUBSTANCE which should be handled by trained staff only.

Applications

- Western Blot

Western blot analysis of Lane 1,3: human serum, Lane 2, 4: plasma, Lane 1, 2: human IgG mouse monoclonal antibody and Lane 3, 4: ALB monoclonal antibody, clone 8F6F9 (Cat # MAB12612).

- Immunohistochemistry (Formalin/PFA-fixed paraffin-embedded sections)

Immunohistochemical staining (Formalin-fixed paraffin-embedded sections) of human lung with ALB monoclonal antibody, clone 8F6F9 (Cat # MAB12612) at 1:200 dilution.

- Enzyme-linked Immunoabsorbent Assay

Gene Info — ALB

Entrez GeneID	213
Gene Name	ALB
Gene Alias	DKFZp779N1935, PRO0883, PRO0903, PRO1341
Gene Description	albumin
Omim ID	103600 194470
Gene Ontology	Hyperlink

Gene Summary

Albumin is a soluble, monomeric protein which comprises about one-half of the blood serum protein. Albumin functions primarily as a carrier protein for steroids, fatty acids, and thyroid hormones and plays a role in stabilizing extracellular fluid volume. Albumin is a globular unglycosylated serum protein of molecular weight 65,000. Albumin is synthesized in the liver as preproalbumin which has an N-terminal peptide that is removed before the nascent protein is released from the rough endoplasmic reticulum. The product, proalbumin, is in turn cleaved in the Golgi vesicles to produce the secreted albumin. [provided by RefSeq]

Other Designations

cell growth inhibiting protein 42|growth-inhibiting protein 20|serum albumin

Disease

- [Alzheimer disease](#)
- [Diabetes Mellitus](#)
- [Hepatitis](#)