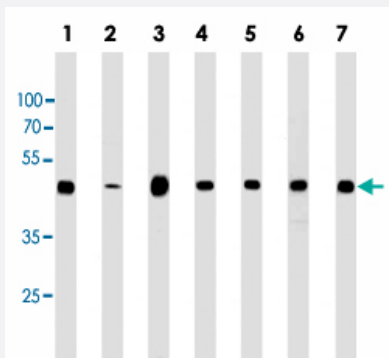


# ENO1 monoclonal antibody, clone 786CT6.6.4

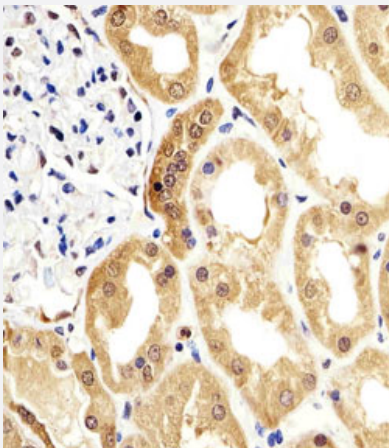
Catalog # MAB12329 Size 400 uL

## Applications



### Western Blot

Western blot analysis of Lane 1: MCF-7 cell line lysates Lane 2: A431 cell line lysates Lane 3: Hela cell line lysates Lane 4: HepG2 cell line lysates Lane 5: mouse NIH/3T3 cell line lysates Lane 6: mouse stomach tissue lysates Lane 7: liver tissue lysates reacted with ENO1 monoclonal antibody (Cat # MAB12329) at 1:1000 dilution.



### Immunohistochemistry (Formalin/PFA-fixed paraffin-embedded sections)

Immunohistochemical staining of paraffin-embedded human kidney section reacted with ENO1 monoclonal antibody (Cat # MAB12329) at 1:25 dilution.

## Specification

Product Description	Mouse monoclonal antibody raised against human ENO1.
Immunogen	Recombinant His fusion protein corresponding to human ENO1.
Host	Mouse
Reactivity	Human, Mouse
Form	Liquid

Purification	Protein G purification
Isotype	IgG, kappa
Recommend Usage	Immunohistochemistry (1:25) Western Blot (1:1000) The optimal working dilution should be determined by the end user.
Storage Buffer	In PBS (0.09% sodium azide)
Storage Instruction	Store at 4°C. For long term storage store at -20°C. Aliquot to avoid repeated freezing and thawing.
Note	This product contains sodium azide: a POISONOUS AND HAZARDOUS SUBSTANCE which should be handled by trained staff only.

## Applications

- Western Blot

Western blot analysis of Lane 1: MCF-7 cell line lysates Lane 2: A431 cell line lysates Lane 3: Hela cell line lysates Lane 4: HepG2 cell line lysates Lane 5: mouse NIH/3T3 cell line lysates Lane 6: mouse stomach tissue lysates Lane 7: liver tissue lysates reacted with ENO1 monoclonal antibody (Cat # MAB12329) at 1:1000 dilution.

- Immunohistochemistry (Formalin/PFA-fixed paraffin-embedded sections)

Immunohistochemical staining of paraffin-embedded human kidney section reacted with ENO1 monoclonal antibody (Cat # MAB12329) at 1:25 dilution.

## Gene Info — ENO1

Entrez GeneID	<a href="#">2023</a>
Gene Name	ENO1
Gene Alias	ENO1L1, MBP-1, MPB1, NNE, PPH
Gene Description	enolase 1, (alpha)
Omim ID	<a href="#">172430</a>
Gene Ontology	<a href="#">Hyperlink</a>

**Gene Summary**

This gene encodes one of three enolase isoenzymes found in mammals; it encodes alpha-enolase, a homodimeric soluble enzyme, and also encodes a shorter monomeric structural lens protein, tau-crystallin. The two proteins are made from the same message. The full length protein, the isoenzyme, is found in the cytoplasm. The shorter protein is produced from an alternative translation start, is localized to the nucleus, and has been found to bind to an element in the c-myc promoter. A pseudogene has been identified that is located on the other arm of the same chromosome. [provided by RefSeq]

**Other Designations**

2-phospho-D-glycerate hydro-lyase|MYC promoter-binding protein 1|OTTHUMP00000001706|alpha enolase like 1|enolase 1|non-neural enolase|phosphopyruvate hydratase|tau-crystallin

**Pathway**

- [Biosynthesis of alkaloids derived from histidine and purine](#)
- [Biosynthesis of alkaloids derived from ornithine](#)
- [Biosynthesis of alkaloids derived from shikimate pathway](#)
- [Biosynthesis of alkaloids derived from terpenoid and polyketide](#)
- [Biosynthesis of phenylpropanoids](#)
- [Biosynthesis of plant hormones](#)
- [Biosynthesis of terpenoids and steroids](#)
- [Glycolysis / Gluconeogenesis](#)
- [Metabolic pathways](#)
- [RNA degradation](#)

**Disease**

- [Myocardial Infarction](#)