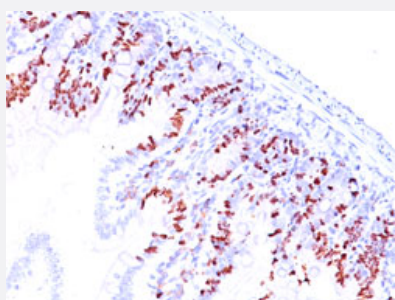


# BrdU monoclonal antibody, clone SPM537

Catalog # MAB12073      Size 100 ug

## Applications



### Immunohistochemistry (Formalin/PFA-fixed paraffin-embedded sections)

Immunohistochemical staining (Formalin-fixed paraffin-embedded sections) of mouse intestine with BrdU monoclonal antibody, clone SPM537 (Cat# MAB12073).

## Specification

<b>Product Description</b>	Mouse monoclonal antibody raised against Bromodeoxyuridine.
<b>Immunogen</b>	Bromodeoxyuridine (BrdU) conjugated to KLH.
<b>Host</b>	Mouse
<b>Theoretical MW (kDa)</b>	307
<b>Form</b>	Liquid
<b>Purification</b>	Protein A/G purification
<b>Isotype</b>	IgG1
<b>Recommend Usage</b>	Immunohistochemistry (0.5-1 ug/mL) Western Blot (0.5-1 ug/mL) The optimal working dilution should be determined by the end user.
<b>Storage Buffer</b>	In PBS (0.05% BSA, 0.05% sodium azide).
<b>Storage Instruction</b>	Store at 4°C. Aliquot to avoid repeated freezing and thawing.

**Note**

This product contains sodium azide: a POISONOUS AND HAZARDOUS SUBSTANCE which should be handled by trained staff only.

---

## Applications

- Western Blot
- Immunohistochemistry (Formalin/PFA-fixed paraffin-embedded sections)

Immunohistochemical staining (Formalin-fixed paraffin-embedded sections) of mouse intestine with BrdU monoclonal antibody, clone SPM537 (Cat# MAB12073).