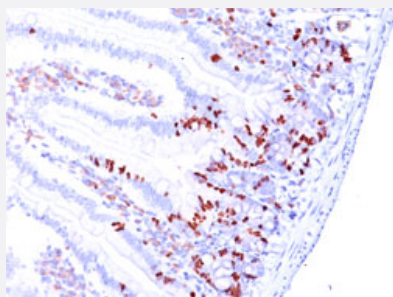


BrdU monoclonal antibody, clone SPM166

Catalog # MAB12072 Size 100 ug

Applications



Immunohistochemistry (Formalin/PFA-fixed paraffin-embedded sections)

Immunohistochemical staining (Formalin-fixed paraffin-embedded sections) of mouse intestine with BrdU monoclonal antibody, clone SPM166 (Cat# MAB12072).

Specification

Product Description	Mouse monoclonal antibody raised against Bromodeoxyuridine.
Immunogen	Bromodeoxyuridine (BrdU) conjugated to KLH.
Host	Mouse
Theoretical MW (kDa)	307
Form	Liquid
Purification	Protein A/G purification
Isotype	IgG1
Recommend Usage	Immunohistochemistry (0.5-1 ug/mL) Western Blot (0.5-1 ug/mL) The optimal working dilution should be determined by the end user.
Storage Buffer	In PBS (0.05% BSA, 0.05% sodium azide).
Storage Instruction	Store at 4°C. Aliquot to avoid repeated freezing and thawing.

Note

This product contains sodium azide: a POISONOUS AND HAZARDOUS SUBSTANCE which should be handled by trained staff only.

Applications

- Western Blot
- Immunohistochemistry (Formalin/PFA-fixed paraffin-embedded sections)

Immunohistochemical staining (Formalin-fixed paraffin-embedded sections) of mouse intestine with BrdU monoclonal antibody, clone SPM166 (Cat# MAB12072).