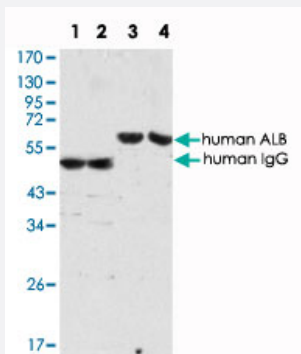


ALB monoclonal antibody, clone 8F6F9

Catalog # MAB10583 Size 100 uL

Applications



Western Blot (Tissue lysate)

Western blot analysis using ALB monoclonal antibody, clone 8F6F9 (Cat # MAB10583) (lane 3, 4) and human IgG mouse mAb (lane 1, 2) against human serum (lane 1, 3) and plasma (lane 2, 4) .

Specification

Product Description	Mouse monoclonal antibody raised against native ALB.
Immunogen	Native human ALB from serum.
Host	Mouse
Theoretical MW (kDa)	69
Reactivity	Human
Form	Liquid
Isotype	IgG1
Recommend Usage	ELISA (1:10000) Western Blot (1:500-1:2000) The optimal working dilution should be determined by the end user.
Storage Buffer	In ascites (0.03% sodium azide)
Storage Instruction	Store at 4°C. For long term storage store at -20°C. Aliquot to avoid repeated freezing and thawing.

Note

This product contains sodium azide: a POISONOUS AND HAZARDOUS SUBSTANCE which should be handled by trained staff only.

Applications

- Western Blot (Tissue lysate)

Western blot analysis using ALB monoclonal antibody, clone 8F6F9 (Cat # MAB10583) (lane 3, 4) and human IgG mouse mAb (lane 1, 2) against human serum (lane 1, 3) and plasma (lane 2, 4) .

- Enzyme-linked Immunoabsorbent Assay

Gene Info — ALB

Entrez GeneID	213
---------------	---------------------

Gene Name	ALB
-----------	-----

Gene Alias	DKFZp779N1935, PRO0883, PRO0903, PRO1341
------------	--

Gene Description	albumin
------------------	---------

Omim ID	103600 194470
---------	---

Gene Ontology	Hyperlink
---------------	---------------------------

Gene Summary	Albumin is a soluble, monomeric protein which comprises about one-half of the blood serum protein. Albumin functions primarily as a carrier protein for steroids, fatty acids, and thyroid hormones and plays a role in stabilizing extracellular fluid volume. Albumin is a globular unglycosylated serum protein of molecular weight 65,000. Albumin is synthesized in the liver as preproalbumin which has an N-terminal peptide that is removed before the nascent protein is released from the rough endoplasmic reticulum. The product, proalbumin, is in turn cleaved in the Golgi vesicles to produce the secreted albumin. [provided by RefSeq]
--------------	--

Other Designations	cell growth inhibiting protein 42 growth-inhibiting protein 20 serum albumin
--------------------	--

Disease

- [Alzheimer disease](#)
- [Diabetes Mellitus](#)
- [Hepatitis](#)