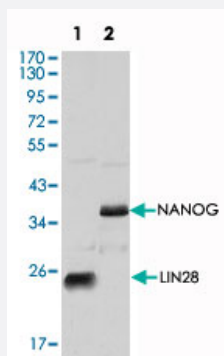


# LIN28 monoclonal antibody, clone 6D1F9

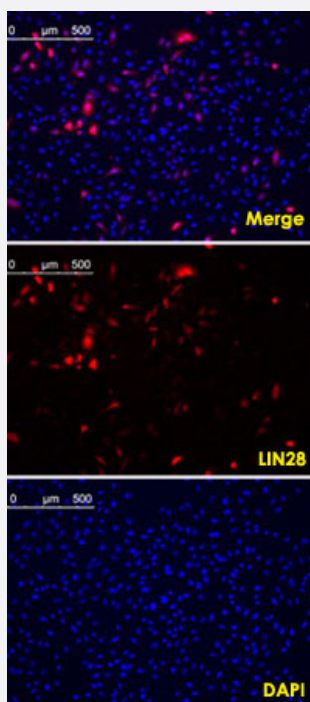
Catalog # MAB10567      Size 100 uL

## Applications



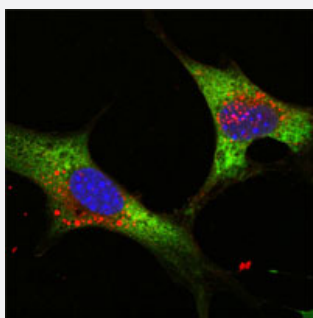
### Western Blot (Cell lysate)

Western blot analysis using LIN28 monoclonal antibody, clone 6D1F9 (Cat # MAB10567) against NTERA-2 cell lysate.



### Immunofluorescence

Confocal immunofluorescence analysis of methanol fixed HeLa cells were transfected with pMX construct of human LIN28, cells were analyzed ~62 hours after transfection.



## Immunofluorescence

Confocal immunofluorescence analysis of NTERA-2 cells using LIN28 monoclonal antibody, clone 6D1F9 (Cat # MAB10567) (green). Blue: DRAQ5 fluorescent DNA dye.

## Specification

<b>Product Description</b>	Mouse monoclonal antibody raised against partial recombinant LIN28.
<b>Immunogen</b>	Recombinant protein corresponding to amino acids 93-209 of human LIN28.
<b>Host</b>	Mouse
<b>Reactivity</b>	Human
<b>Form</b>	Liquid
<b>Purification</b>	Protein G purification
<b>Isotype</b>	IgG1
<b>Recommend Usage</b>	ELISA (1:10000) Western Blot (1:500-1:2000) Immunohistochemistry (1:200-1:1000) Immunofluorescence (1:200-1:1000) The optimal working dilution should be determined by the end user.
<b>Storage Buffer</b>	In 10 mM PBS, pH 7.4 (0.03% sodium azide)
<b>Storage Instruction</b>	Store at 4°C. For long term storage store at -20°C. Aliquot to avoid repeated freezing and thawing.
<b>Note</b>	This product contains sodium azide: a POISONOUS AND HAZARDOUS SUBSTANCE which should be handled by trained staff only.

## Applications

### ● Western Blot (Cell lysate)

Western blot analysis using LIN28 monoclonal antibody, clone 6D1F9 (Cat # MAB10567) against NTERA-2 cell lysate.

- Immunohistochemistry

- Immunofluorescence

Confocal immunofluorescence analysis of methanol fixed HeLa cells were transfected with pMX construct of human LIN28, cells were analyzed ~62 hours after transfection.

- Immunofluorescence

Confocal immunofluorescence analysis of NTERA-2 cells using LIN28 monoclonal antibody, clone 6D1F9 (Cat # MAB10567) (green). Blue: DRAQ5 fluorescent DNA dye.

- Enzyme-linked Immunoabsorbent Assay

## Gene Info — LIN28

Entrez GeneID	<a href="#">79727</a>
Gene Name	LIN28
Gene Alias	CSDD1, FLJ12457, LIN-28, LIN28A, ZCCHC1
Gene Description	lin-28 homolog (C. elegans)
Omim ID	<a href="#">611043</a>
Gene Ontology	<a href="#">Hyperlink</a>
Gene Summary	CCHC domain containing 1
Other Designations	OTTHUMP00000003663 RNA-binding protein LIN-28 lin-28 homolog zinc finger, CCHC domain c ontaining 1