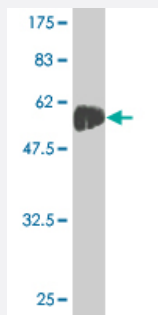


# HIV-1, gp120 monoclonal antibody, clone 3F8

Catalog # MAB0036-M01

Size 100 ug

## Applications



## Specification

|                                |   |
|--------------------------------|---|
| <b>Product Description</b>     | Mouse monoclonal antibody raised against human Immunodeficiency Virus type 1 (HIV-1), CN54 gp 120 outer domain.                             |
| <b>Immunogen</b>               | Recombinant Fc fusion protein corresponding to amino acids 255-477 of human Immunodeficiency Virus type 1 (HIV-1), CN54 gp120 outer domain. |
| <b>Host</b>                    | Mouse   |
| <b>Reactivity</b>              | Human immunodeficiency virus (HIV)  |
| <b>Form</b>                    | Liquid  |
| <b>Isotype</b>                 | IgG2a, kappa  |
| <b>Quality Control Testing</b> | Antibody Reactive Against Recombinant Protein   |
| <b>Recommend Usage</b>         | The optimal working dilution should be determined by the end user.  |
| <b>Storage Buffer</b>          | In PBS, pH 7.4  |
| <b>Storage Instruction</b>     | Store at -20°C or lower. Aliquot to avoid repeated freezing and thawing.  |

## Applications

- Western Blot (Recombinant protein)
- ELISA

## Publication Reference

- [Guiding the humoral response against HIV-1 toward a MPER adjacent region by immunization with a VLP-formulated antibody-selected envelope variant.](#)

Beltran-Pavez C, Ferreira CB, Merino-Mansilla A, Fabra-Garcia A, Casadella M, Noguera-Julian M, Paredes R, Olvera A, Haro I, Brander C, Garcia F, Gatell JM, Yuste E, Sanchez-Merino V.

PLoS One 2018 Dec; 13(12):e0208345.

Application: ELISA, Rabbit, Rabbit serum

- [Mapping the immune response to the outer domain of a human immunodeficiency virus-1 clade C gp120.](#)

Chen H, Xu X, Lin HH, Chen SH, Forsman A, Aasa-Chapman M, Jones IM.

The Journal of General Virology 2008 Oct; 89(Pt 10):2597.

Application: Func, Human, TZM-bl cells