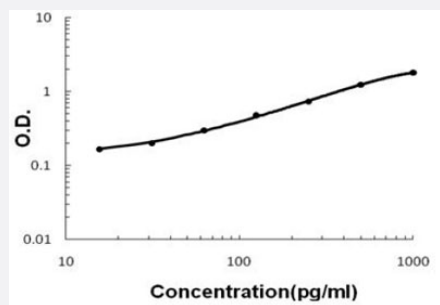


AMBP (Human) ELISA Kit

Catalog # KA5319 Size 1 Kit

Applications



The standard curve is for the purpose of illustration only and should not be used to calculate unknowns. A standard curve should be generated each time the assay is performed.

Specification

Product Description	AMBP (Human) ELISA Kit is a sandwich enzyme-linked immunosorbent assay for quantitative detection of human Bikunin in cell culture supernates, serum and plasma (heparin, EDTA).
Suitable Sample	Cell culture supernates, serum and plasma (heparin, EDTA)
Sample Volume	100 uL
Label	HRP-conjugated
Detection Method	Colorimetric
Assay Type	Quantitative
Calibration Range	15.6 to 1000 pg/mL
Reactivity	Human
Regulatory Status	For research use only (RUO)
Quality Control Testing	Standard curve The standard curve is for the purpose of illustration only and should not be used to calculate unknowns. A standard curve should be generated each time the assay is performed.
Storage Instruction	Store at 4°C for six months. For long term storage store at -20°C. Avoid repeated freezing and thawing.

Applications

- Quantification

Gene Info — AMBP

Entrez GeneID	259
Gene Name	AMBP
Gene Alias	EDC1, HCP, HI30, IATIL, ITI, ITIL, ITILC, UTI
Gene Description	alpha-1-microglobulin/bikunin precursor
Omim ID	176870
Gene Ontology	Hyperlink
Gene Summary	This gene encodes a complex glycoprotein secreted in plasma. The precursor is proteolytically processed into distinct functioning proteins: alpha-1-microglobulin, which belongs to the superfamily of lipocalin transport proteins and may play a role in the regulation of inflammatory processes, and bikunin, which is a urinary trypsin inhibitor belonging to the superfamily of Kunitz-type protease inhibitors and plays an important role in many physiological and pathological processes. This gene is located on chromosome 9 in a cluster of lipocalin genes. [provided by RefSeq]
Other Designations	OTTHUMP00000021967 OTTHUMP00000063975 alpha-1-microglobulin/bikunin bikunin complex-forming glycoprotein heterogeneous in charge growth-inhibiting protein 19 inter-alpha-trypsin inhibitor light chain protein HC trypstatin uristatin uronic-acid-rich protei

Disease

- [Cardiovascular Diseases](#)
- [Diabetes Mellitus](#)
- [Edema](#)
- [Kidney Calculi](#)