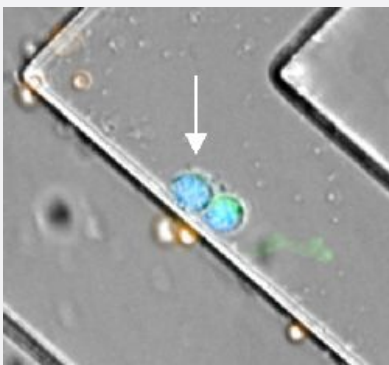


# CytoQuest™ Extravillous Trophoblast HLA-G TBA CD45 Antibody Kit

Catalog # KA4515

Size 1 Kit

## Applications



### Immunofluorescence (Circulating Trophoblast)

Representative images of JEG-3 cell and PBMC. JEG-3 cells (white arrow) were detected by using immunofluorescence staining for TBA (FITC, green), CD45 (PE, orange) and Nucleus (Hoechst, blue).

## Specification

### Product Description

CytoQuest™ Extravillous Trophoblast HLA-G TBA CD45 Antibody Kit contains antibodies for immobilization and immunostaining of circulating circulating trophoblasts.

### Supplied Product

Kit content:

1. Anti-HLA-G capturing antibody (Biotin):

Biotin conjugated Anti-HLA-G capturing antibody for trophoblast capturing.

2. Anti-TBA detecting antibody (FITC):

FITC conjugated Anti-TBA antibody for trophoblast detection.

3. Anti-CD45 detecting antibody (PE):

PE conjugated Anti-CD45 antibody for trophoblast detection.

4. Stabilizing Buffer

\*Reagents are sufficient for 20 assays using recommended protocol.

### Storage Instruction

Store at 4°C.

## Applications

- Immunofluorescence (Circulating Trophoblast)

Representative images of JEG-3 cell and PBMC. JEG-3 cells (white arrow) were detected by using immunofluorescence staining for TBA (FITC, green), CD45 (PE, orange) and Nucleus (Hoechst, blue).