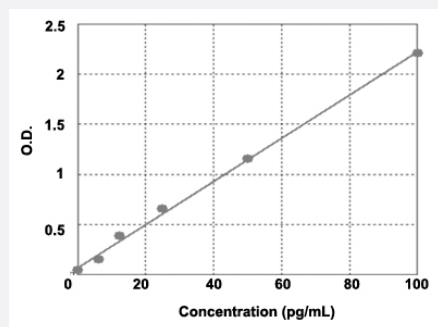


II1b (Mouse) ELISA Kit

Catalog # KA3058

Size 1 Kit

Applications



The standard curve is for the purpose of illustration only and should not be used to calculate unknowns. A standard curve should be generated each time the assay is performed.

Specification

Product Description	II1b (Mouse) ELISA Kit is intended for the quantitative measurement of mouse II1b.
Suitable Sample	Cell Culture Supernatant, Plasma, Serum, Tissue Sample, Urine
Sample Volume	10 uL
Label	HRP-conjugated
Detection Method	Colorimetric
Assay Type	Quantitative
Calibration Range	5 to 100 pg/mL
Limit of Detection	10 pg/mL
Reactivity	Mouse
Regulation Status	For research use only (RUO)
Quality Control Testing	Standard Curve The standard curve is for the purpose of illustration only and should not be used to calculate unknowns. A standard curve should be generated each time the assay is performed.
Storage Instruction	Store at 4°C for 6 months.

Applications

- Quantification

Gene Info — Il1b

Entrez GeneID	16176
---------------	-----------------------

Gene Name	Il1b
-----------	------

Gene Alias	IL-1beta, IL-1b
------------	-----------------

Gene Description	interleukin 1 beta
------------------	--------------------

Gene Ontology	Hyperlink
---------------	---------------------------

Gene Summary	beta
--------------	------

Other Designations	OTTMUSP00000016525 interleukin 1, beta
--------------------	--