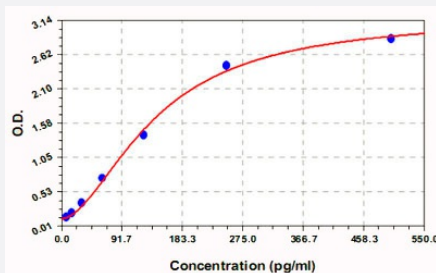


IL3 (Mouse) ELISA Kit

Catalog # KA0361 Size 1 Kit

Applications



The standard curve is for the purpose of illustration only and should not be used to calculate unknowns. A standard curve should be generated each time the assay is performed.

Specification

Product Description	IL3 (Mouse) ELISA Kit is a sandwich enzyme immunoassay for the quantitative measurement of mouse IL3.
Suitable Sample	Body Fluid, Cell Culture Supernatant, Plasma, Serum, Tissue Lysate
Sample Volume	100 μ L
Label	HRP-conjugated
Detection Method	Colorimetric
Assay Type	Quantitative
Calibration Range	7.8 to 500 pg/mL
Reactivity	Mouse
Regulation Status	For research use only (RUO)
Quality Control Testing	Standard curve The standard curve is for the purpose of illustration only and should not be used to calculate unknowns. A standard curve should be generated each time the assay is performed.
Storage Instruction	Store at 4°C for 6 months, at -20°C for 12 months. Avoid multiple freeze-thaw cycles.

Applications

- Quantification

Gene Info — Il3

Entrez GeneID	16187
Gene Name	Il3
Gene Alias	BPA, Csfmu, HCGF, Il-3, MCGF, PSF
Gene Description	interleukin 3
Gene Ontology	Hyperlink
Other Designations	OTTMUSP00000005831

Publication Reference

- [The interleukin 3 gene is located on human chromosome 5 and is deleted in myeloid leukemias with a deletion of 5q.](#)

Le Beau MM, Epstein ND, O'Brien SJ, Nienhuis AW, Yang YC, Clark SC, Rowley JD.
PNAS 1987 Aug; 84(16):5913.

- [Automated chemical synthesis of a protein growth factor for hemopoietic cells, interleukin-3.](#)

Clark-Lewis I, Aebersold R, Ziltener H, Schrader JW, Hood LE, Kent SB.
Science 1986 Jan; 231(4734):134.

Application: Quant, Human, Bone marrow cells

- [Molecular cloning of cDNA for murine interleukin-3.](#)

Fung MC, Hapel AJ, Ymer S, Cohen DR, Johnson RM, Campbell HD, Young IG.
Nature 1984 Jan; 307(5948):233.