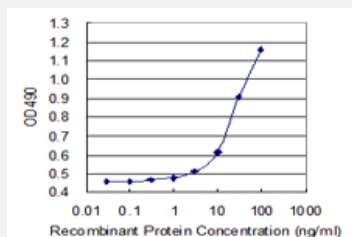


CD276 (Human) Matched Antibody Pair

Catalog # H00080381-AP41

Size 1 Set

Applications



Sandwich ELISA detection sensitivity ranging from 3 ng/ml to 100 ng/ml.

Specification

Product Description	This antibody pair set comes with a matched antibody pair to detect and quantify the protein level of human CD276.
Reactivity	Human
Interspecies Antigen Sequence	Mouse (90); Rat (84)
Quality Control Testing	Standard curve using mammalian expressed recombinant protein as an analyte. Sandwich ELISA detection sensitivity ranging from 3 ng/ml to 100 ng/ml.
Supplied Product	Antibody pair set content: 1. Capture antibody: mouse monoclonal anti-CD276, IgG1 Kappa (100 ug) 2. Detection antibody: biotinylated mouse monoclonal anti-CD276, IgG1 Kappa (50 ug) *Reagents are sufficient for at least 3-5 x 96 well plates using recommended protocols.
Storage Instruction	Store reagents of the antibody pair set at -20°C or lower. Please aliquot to avoid repeated freeze thaw cycle. Reagents should be returned to -20°C storage immediately after use.

Applications

- ELISA Pair (Recombinant protein)

[Protocol Download](#)

Gene Info — CD276

Entrez GeneID [80381](#)

Gene Name CD276

Gene Alias B7-H3, B7H3

Gene Description CD276 molecule

Omim ID [605715](#)

Gene Ontology [Hyperlink](#)

Gene Summary Costimulatory B7 molecules (e.g., B7-1, or CD80; MIM 112203) signal through CD28 (MIM 186760) family molecules such as CD28, CTLA4 (MIM 123890), and ICOS (MIM 604558).[supplied by OMIM]

Other Designations B7 homolog 3|CD276 antigen

Pathway

- [Cell adhesion molecules \(CAMs\)](#)