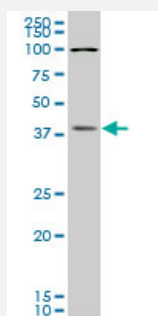


# BOLL monoclonal antibody (M05), clone 5B8

Catalog # H00066037-M05

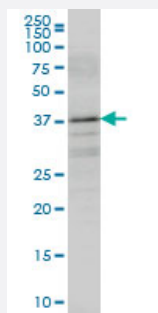
Size 100 ug

## Applications



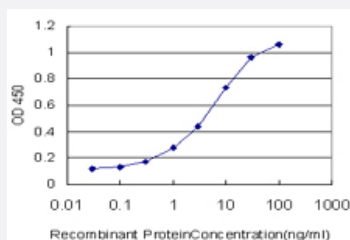
### Western Blot (Tissue lysate)

BOLL monoclonal antibody (M05), clone 5B8. Western Blot analysis of BOLL expression in human liver.



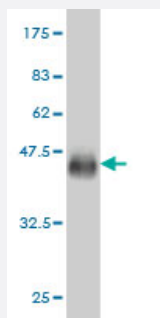
### Western Blot (Cell lysate)

BOLL monoclonal antibody (M05), clone 5B8 Western Blot analysis of BOLL expression in SW-13 ( Cat # L005V1 ).



### Sandwich ELISA (Recombinant protein)

Detection limit for recombinant GST tagged BOLL is approximately 0.1ng/ml as a capture antibody.



Western Blot detection against Immunogen (36.63 KDa) .

## Specification

<b>Product Description</b>	Mouse monoclonal antibody raised against a partial recombinant BOLL.
<b>Immunogen</b>	BOLL (NP_149019, 185 a.a. ~ 283 a.a) partial recombinant protein with GST tag. MW of the GST tag alone is 26 KDa.
<b>Sequence</b>	ATTQYLPGQWQWSVPQPSASSAPFLYLQPSSEVIYQPVEIAQDGGCVPPPLSLMETSVPEPYSDH GVQATYHQVYAPSAITMPAPVMQPEPIKTVWSIHY
<b>Host</b>	Mouse
<b>Reactivity</b>	Human
<b>Interspecies Antigen Sequence</b>	Mouse (92); Rat (92)
<b>Isotype</b>	IgG2a Kappa
<b>Quality Control Testing</b>	Antibody Reactive Against Recombinant Protein. Western Blot detection against Immunogen (36.63 KDa) .
<b>Storage Buffer</b>	In 1x PBS, pH 7.4
<b>Storage Instruction</b>	Store at -20°C or lower. Aliquot to avoid repeated freezing and thawing.

## Applications

- Western Blot (Tissue lysate)

BOLL monoclonal antibody (M05), clone 5B8. Western Blot analysis of BOLL expression in human liver.

[Protocol Download](#)

- Western Blot (Cell lysate)

BOLL monoclonal antibody (M05), clone 5B8 Western Blot analysis of BOLL expression in SW-13 ( Cat # L005V1 ).

[Protocol Download](#)

- Western Blot (Recombinant protein)

[Protocol Download](#)

- Sandwich ELISA (Recombinant protein)

Detection limit for recombinant GST tagged BOLL is approximately 0.1ng/ml as a capture antibody.

[Protocol Download](#)

- ELISA

## Gene Info — BOLL

Entrez GeneID [66037](#)

GeneBank Accession# [NM\\_033030](#)

Protein Accession# [NP\\_149019](#)

Gene Name BOLL

Gene Alias -

Gene Description bol, boule-like (Drosophila)

Omim ID [606165](#)

Gene Ontology [Hyperlink](#)

**Gene Summary** This gene belongs to the DAZ gene family required for germ cell development. It encodes an RNA-binding protein which is more similar to Drosophila Boule than to human proteins encoded by genes DAZ (deleted in azoospermia) or DAZL (deleted in azoospermia-like). Loss of this gene function results in the absence of sperm in semen (azoospermia). Histological studies demonstrated that the primary defect is at the meiotic G2/M transition. Two alternatively spliced transcript variants encoding distinct isoforms have been found for this gene. [provided by RefSeq]

Other Designations boule

## Disease

- [Azoospermia](#)
- [Infertility](#)
- [Oligospermia](#)