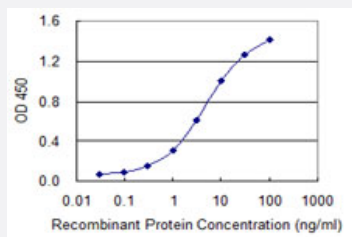


# CACNG7 monoclonal antibody (M01), clone 1F7

Catalog # H00059284-M01

Size 100 ug

## Applications



### Sandwich ELISA (Recombinant protein)

Detection limit for recombinant GST tagged CACNG7 is 0.03 ng/ml as a capture antibody.



Western Blot detection against Immunogen (33.66 KDa) .

## Specification

### Product Description

Mouse monoclonal antibody raised against a partial recombinant CACNG7.

### Immunogen

CACNG7 (NP\_114102.2, 203 a.a. ~ 274 a.a) partial recombinant protein with GST tag. MW of the GST tag alone is 26 KDa.

### Sequence

RYAEEEMYRPHPAFYRPLSDCSDYSGQFLQPEAWRRGRSPDISSDVSIQMTQNYPPAIKYPDH  
LHISTSP

### Host

Mouse

### Reactivity

Human

### Isotype

IgG1 Kappa

**Quality Control Testing**

Antibody Reactive Against Recombinant Protein.  
Western Blot detection against Immunogen (33.66 KDa) .

**Storage Buffer**

In 1x PBS, pH 7.4

**Storage Instruction**

Store at -20°C or lower. Aliquot to avoid repeated freezing and thawing.

## Applications

- Western Blot (Recombinant protein)

[Protocol Download](#)

- Sandwich ELISA (Recombinant protein)

Detection limit for recombinant GST tagged CACNG7 is 0.03 ng/ml as a capture antibody.

[Protocol Download](#)

- ELISA

## Gene Info — CACNG7

**Entrez GeneID**

[59284](#)

**GeneBank Accession#**

[NM\\_031896](#)

**Protein Accession#**

[NP\\_114102.2](#)

**Gene Name**

CACNG7

**Gene Alias**

-

**Gene Description**

calcium channel, voltage-dependent, gamma subunit 7

**Omim ID**

[606899](#)

**Gene Ontology**

[Hyperlink](#)

**Gene Summary**

The mouse protein stargazin is one of five subunits comprising neuronal voltage-gated calcium channels. This subunit, gamma, is thought to stabilize the calcium channel in an inactive (closed) state. Mutations in the gene encoding stargazin have been associated with absence seizures, also known as petit-mal or spike-wave seizures. The protein encoded by this gene is structurally similar to the mouse stargazin protein and is a member of the neuronal calcium channel gamma subunit protein family. However, it appears unlikely that the encoded protein is part of a functional calcium channel. Rather, it appears to inhibit the expression of a specific calcium channel subunit. [provided by RefSeq]

**Other Designations**

OTTHUMP00000067298|neuronal voltage-gated calcium channel gamma-7 subunit|voltage-dependent calcium channel gamma-7 subunit

## Pathway

- [Arrhythmogenic right ventricular cardiomyopathy \(ARVC\)](#)
- [Cardiac muscle contraction](#)
- [Hypertrophic cardiomyopathy \(HCM\)](#)
- [MAPK signaling pathway](#)