

DNAxPAb

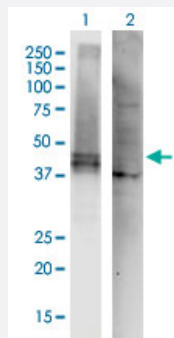
Hard-to-Find  
Antibody

# PYCARD DNAXPab

Catalog # H00029108-W01P

Size 100 ug

## Applications



### Western Blot (Transfected lysate)

Western Blot analysis of PYCARD expression in transfected 293T cell line by PYCARD DNAXPab polyclonal antibody.

Lane 1: PYCARD transfected lysate(42.72 KDa).

Lane 2: Non-transfected lysate.

## Specification

Product Description	Rabbit polyclonal antibody raised against a full-length human PYCARD DNA using DNAx™ Immune technology.
Technology	<a href="#">DNAx™ Immune</a>
Immunogen	PYCARD (NP_037390.2, 1 a.a. ~ 195 a.a) full-length human DNA
Sequence	MGRARDAILDALENLTAEELKKFKLKLLSVPLREGYGRIPRGALLSMDALDLTDKLVSFYLETYGA ELTANVLRDMGLQEMAGQLQAATHQGSAAAPAGIQAPPQSAAKPGLHFIDQHRAALIARVTNVE WLLDALYGKVLTDQYQAVRAEPTNPSKMRKLSFTPAWNWTCKDLLLQALRESQSYLVEDLER S
Host	Rabbit
Reactivity	Human
Interspecies Antigen Sequence	Mouse (72); Rat (70)
Purification	Protein A
Quality Control Testing	Antibody reactive against mammalian transfected lysate.

**Storage Buffer**

In 1x PBS, pH 7.4

**Storage Instruction**

Store at -20°C or lower. Aliquot to avoid repeated freezing and thawing.

## Applications

- Western Blot (Transfected lysate)

Western Blot analysis of PYCARD expression in transfected 293T cell line by PYCARD DNAXPab polyclonal antibody.

Lane 1: PYCARD transfected lysate(42.72 KDa).

Lane 2: Non-transfected lysate.

[Protocol Download](#)

- Immunofluorescence (Transfected cell)

- Flow Cytometry (Transfected cell)

## Gene Info — PYCARD

**Entrez GeneID**[29108](#)**GeneBank Accession#**[NM\\_013258.3](#)**Protein Accession#**[NP\\_037390.2](#)**Gene Name**

PYCARD

**Gene Alias**

ASC, CARD5, MGC10332, TMS, TMS-1, TMS1

**Gene Description**

PYD and CARD domain containing

**Omim ID**[606838](#)**Gene Ontology**[Hyperlink](#)**Gene Summary**

This gene encodes an adaptor protein that is composed of two protein-protein interaction domains: a N-terminal PYRIN-PAAD-DAPIN domain (PYD) and a C-terminal caspase-recruitment domain (CARD). The PYD and CARD domains are members of the six-helix bundle death domain-fold superfamily that mediates assembly of large signaling complexes in the inflammatory and apoptotic signaling pathways via the activation of caspase. In normal cells, this protein is localized to the cytoplasm; however, in cells undergoing apoptosis, it forms ball-like aggregates near the nuclear periphery. Two transcript variants encoding different isoforms have been found for this gene. [provided by RefSeq]

**Other Designations**

apoptosis-associated speck-like protein containing a CARD|caspase recruitment domain protein  
5|target of methylation-induced silencing-1

---

**Disease**

- [Arthritis](#)
- [Genetic Predisposition to Disease](#)