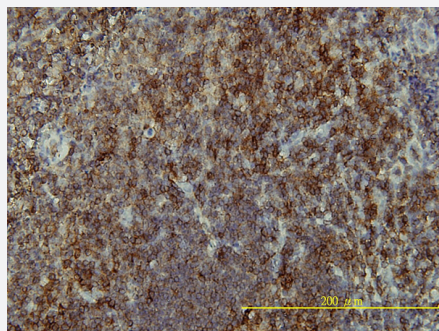


LAT monoclonal antibody (M01), clone 3B11-1D5

Catalog # H00027040-M01

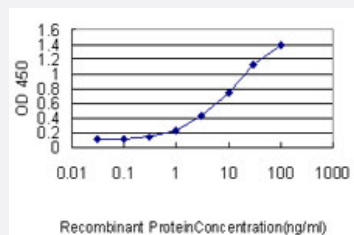
Size 100 ug

Applications



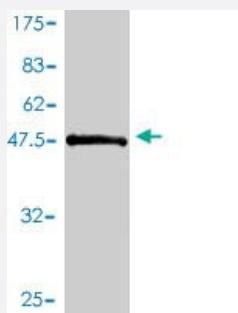
Immunohistochemistry (Formalin/PFA-fixed paraffin-embedded sections)

Immunoperoxidase of monoclonal antibody to LAT on formalin-fixed paraffin-embedded human tonsil tissue. [antibody concentration 5 ug/ml]



Sandwich ELISA (Recombinant protein)

Detection limit for recombinant GST tagged LAT is approximately 0.03ng/ml as a capture antibody.



Western Blot detection against Immunogen (51.37 KDa) .

Specification

Product Description

Mouse monoclonal antibody raised against a full length recombinant LAT.

Immunogen	LAT (AAH11563, 1 a.a. ~ 233 a.a) full-length recombinant protein with GST tag. MW of the GST tag alone is 26 KDa.
Sequence	MEEAILVPCVLGLLLLPILAMLMALCVHCHRLPGSYDSTSSDSLPRGIQFKRPHTVAPWPPAYPP VTSYPPLSQPDLLPIRSPQPLGGPHRTPSSRRSDGANSVASYENEEPACEDADEDEDDYHNP GYLVVLPDSTPATSTAAPSAPALSTPGIRDSAFSMESIDDYVNVPESGESAEASLDGSREYVNV SELHPGAAKTEPAALSSQEAEEVEEEGAPDYENLQELN
Host	Mouse
Reactivity	Human
Isotype	IgG1 kappa
Quality Control Testing	Antibody Reactive Against Recombinant Protein. Western Blot detection against Immunogen (51.37 KDa) .
Storage Buffer	In 1x PBS, pH 7.4
Storage Instruction	Store at -20°C or lower. Aliquot to avoid repeated freezing and thawing.

Applications

- Western Blot (Recombinant protein)

[Protocol Download](#)

- Immunohistochemistry (Formalin/PFA-fixed paraffin-embedded sections)

Immunoperoxidase of monoclonal antibody to LAT on formalin-fixed paraffin-embedded human tonsil tissue. [antibody concentration 5 ug/ml]

[Protocol Download](#)

- Sandwich ELISA (Recombinant protein)

Detection limit for recombinant GST tagged LAT is approximately 0.03ng/ml as a capture antibody.

[Protocol Download](#)

- ELISA

Gene Info — LAT

Entrez GeneID [27040](#)

GeneBank Accession#	BC011563
Protein Accession#	AAH11563
Gene Name	LAT
Gene Alias	LAT1, pp36
Gene Description	linker for activation of T cells
Omim ID	602354
Gene Ontology	Hyperlink
Gene Summary	<p>The protein encoded by this gene is phosphorylated by ZAP-70/Syk protein tyrosine kinases following activation of the T-cell antigen receptor (TCR) signal transduction pathway. This transmembrane protein localizes to lipid rafts and acts as a docking site for SH2 domain-containing proteins. Upon phosphorylation, this protein recruits multiple adaptor proteins and downstream signaling molecules into multimolecular signaling complexes located near the site of TCR engagement. Alternative splicing results in multiple transcript variants encoding different isoforms. [provided by RefSeq]</p>
Other Designations	36 kDa phospho-tyrosine adaptor protein

Pathway

- [Fc epsilon RI signaling pathway](#)
- [Fc gamma R-mediated phagocytosis](#)
- [Natural killer cell mediated cytotoxicity](#)
- [T cell receptor signaling pathway](#)