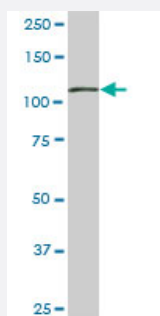


# TRIM28 monoclonal antibody (M01), clone 4E6

Catalog # H00010155-M01

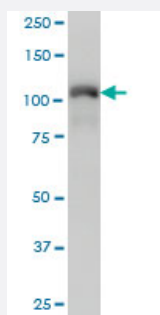
Size 100 ug

## Applications



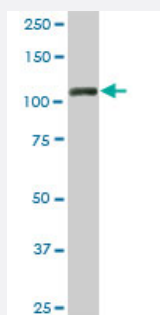
### Western Blot (Cell lysate)

TRIM28 monoclonal antibody (M01), clone 4E6. Western Blot analysis of TRIM28 expression in NIH/3T3 ( Cat # L018V1 ).



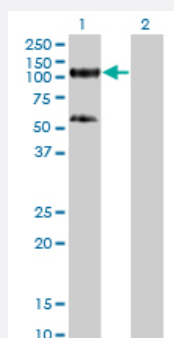
### Western Blot (Cell lysate)

TRIM28 monoclonal antibody (M01), clone 4E6 Western Blot analysis of TRIM28 expression in HeLa S3 NE ( Cat # L013V3 ).



### Western Blot (Cell lysate)

TRIM28 monoclonal antibody (M01), clone 4E6. Western Blot analysis of TRIM28 expression in PC-12 ( Cat # L012V1 ).

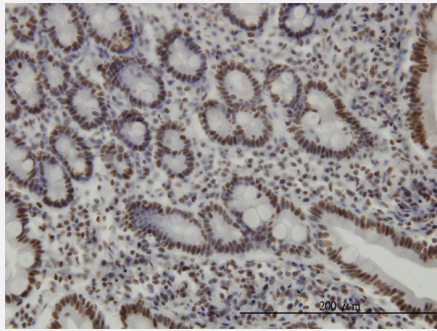


### Western Blot (Transfected lysate)

Western Blot analysis of TRIM28 expression in transfected 293T cell line by TRIM28 monoclonal antibody (M01), clone 4E6.

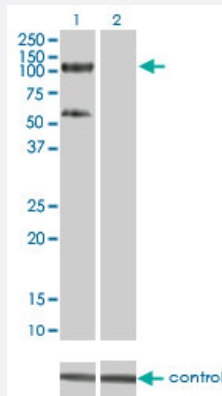
Lane 1: TRIM28 transfected lysate(88.5 KDa).

Lane 2: Non-transfected lysate.



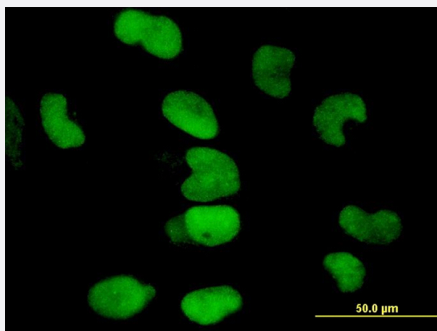
## Immunohistochemistry (Formalin/PFA-fixed paraffin-embedded sections)

Immunoperoxidase of monoclonal antibody to TRIM28 on formalin-fixed paraffin-embedded human small Intestine. [antibody concentration 3 ug/ml]



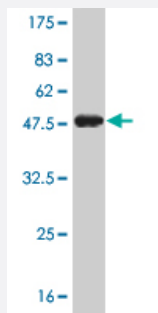
## RNAi Knockdown (Antibody validated)

Western blot analysis of TRIM28 over-expressed 293 cell line, cotransfected with TRIM28 Validated Chimera RNAi ( Cat # H00010155-R01V ) (Lane 2) or non-transfected control (Lane 1). Blot probed with TRIM28 monoclonal antibody (M01) clone 4E6 (Cat # H00010155-M01 ). GAPDH ( 36.1 kDa ) used as specificity and loading control.



## Immunofluorescence

Immunofluorescence of monoclonal antibody to TRIM28 on HeLa cell. [antibody concentration 10 ug/ml]



Western Blot detection against Immunogen (41.69 KDa) .

## Specification

### Product Description

Mouse monoclonal antibody raised against a partial recombinant TRIM28.

### Immunogen

TRIM28 (AAH04978, 379 a.a. ~ 524 a.a) partial recombinant protein with GST tag. MW of the GST tag alone is 26 KDa.

Sequence	MDPVEPHGEMKFQWDLNAWTKSAEAFGKIVAERP GTNSTGPAPMAPPRAPGPLSKQGSGSSQ PMEVQEGYGFGSGDDPYSSAEPHVSGVKRSRSGEGEVSGLMRKVPRVSLERLDLDTADSQP PVFKVFPGSTTEDYNLMIER
Host	Mouse
Reactivity	Human, Mouse, Rat
Interspecies Antigen Sequence	Mouse (93); Rat (93)
Isotype	IgG2b Kappa
Quality Control Testing	Antibody Reactive Against Recombinant Protein. Western Blot detection against Immunogen (41.69 KDa) .
Storage Buffer	In 1x PBS, pH 7.4
Storage Instruction	Store at -20°C or lower. Aliquot to avoid repeated freezing and thawing.

## Applications

- Western Blot (Cell lysate)

TRIM28 monoclonal antibody (M01), clone 4E6. Western Blot analysis of TRIM28 expression in NIH/3T3 ( Cat # L018V1 ).

[Protocol Download](#)

- Western Blot (Cell lysate)

TRIM28 monoclonal antibody (M01), clone 4E6 Western Blot analysis of TRIM28 expression in Hela S3 NE ( Cat # L013V3 ).

[Protocol Download](#)

- Western Blot (Cell lysate)

TRIM28 monoclonal antibody (M01), clone 4E6. Western Blot analysis of TRIM28 expression in PC-12 ( Cat # L012V1 ).

[Protocol Download](#)

- Western Blot (Transfected lysate)

Western Blot analysis of TRIM28 expression in transfected 293T cell line by TRIM28 monoclonal antibody (M01), clone 4E6.

Lane 1: TRIM28 transfected lysate(88.5 KDa).

Lane 2: Non-transfected lysate.

[Protocol Download](#)

- Western Blot (Recombinant protein)

[Protocol Download](#)

- Immunohistochemistry (Formalin/PFA-fixed paraffin-embedded sections)

Immunoperoxidase of monoclonal antibody to TRIM28 on formalin-fixed paraffin-embedded human small Intestine. [antibody concentration 3 ug/ml]

[Protocol Download](#)

- ELISA

- RNAi Knockdown (Antibody validated)

Western blot analysis of TRIM28 over-expressed 293 cell line, cotransfected with TRIM28 Validated Chimera RNAi ( Cat # H00010155-R01V ) (Lane 2) or non-transfected control (Lane 1). Blot probed with TRIM28 monoclonal antibody (M01) clone 4E6 (Cat # H00010155-M01 ). GAPDH ( 36.1 kDa ) used as specificity and loading control.

[Protocol Download](#)

- Immunofluorescence

Immunofluorescence of monoclonal antibody to TRIM28 on HeLa cell. [antibody concentration 10 ug/ml]

## Gene Info — TRIM28

Entrez GeneID [10155](#)

GeneBank Accession# [BC004978](#)

Protein Accession# [AAH04978](#)

Gene Name TRIM28

Gene Alias FLJ29029, KAP1, RNF96, TF1B, TIF1B

Gene Description tripartite motif-containing 28

Omim ID [601742](#)

Gene Ontology [Hyperlink](#)

**Gene Summary** The protein encoded by this gene mediates transcriptional control by interaction with the Kruppel-associated box repression domain found in many transcription factors. The protein localizes to the nucleus and is thought to associate with specific chromatin regions. The protein is a member of the tripartite motif family. This tripartite motif includes three zinc-binding domains, a RING, a B-box type 1 and a B-box type 2, and a coiled-coil region. [provided by RefSeq]

**Other Designations**

KRAB-associated protein 1|nuclear corepressor KAP-1|transcriptional intermediary factor 1-beta|  
tripartite motif-containing 28 protein

**Publication Reference**

- [Multipotent Adult Germline Stem Cells and Embryonic Stem Cells Functional Proteomics Revealed an Important Role of Eukaryotic Initiation Factor 5A \(Eif5a\) in Stem Cell Differentiation.](#)

Dihazi H, Dihazi GH, Jahn O, Meyer S, Nolte J, Asif AR, Mueller GA, Engel W.

Journal of Proteome Research 2011 Apr; 10(4):1962.

Application: WB, Human, Multipotent adult germline stem cells(maGSC), Embryonic stem cells (ESCs)