

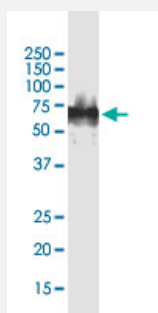
CX Grade

Cell-Surface Vimentin (CSV) monoclonal antibody, clone 84-1

Catalog # H00007431-M08J

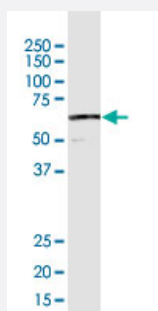
Size 50 ug

Applications



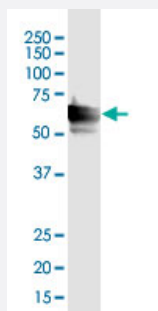
Western Blot (Cell lysate)

Cell-Surface Vimentin (CSV) monoclonal antibody, clone 84-1. Western Blot analysis of VIM expression in MDA-MB-231.



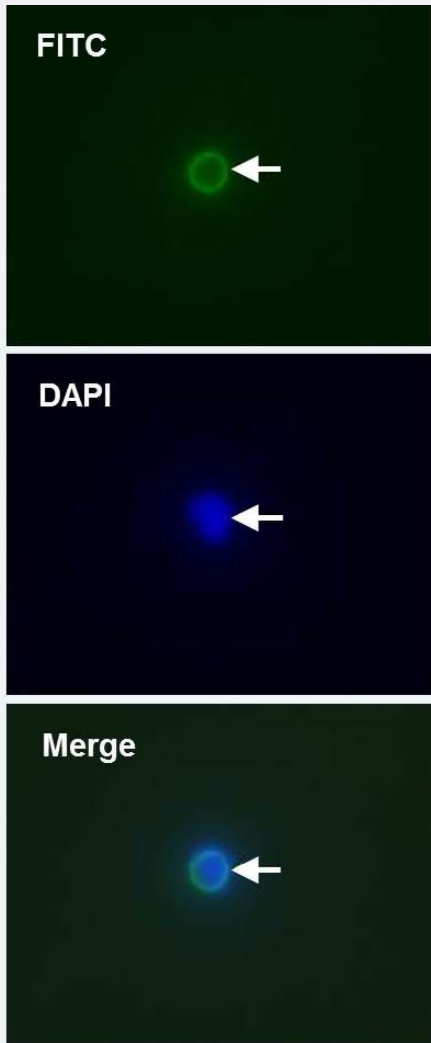
Western Blot (Cell lysate)

Cell-Surface Vimentin (CSV) monoclonal antibody, clone 84-1. Western Blot analysis of VIM expression in SKNBE2.



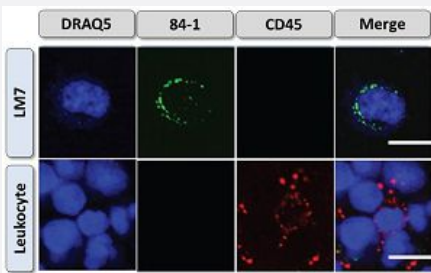
Western Blot (Cell lysate)

Cell-Surface Vimentin (CSV) monoclonal antibody, clone 84-1. Western Blot analysis of VIM expression in PC-3.



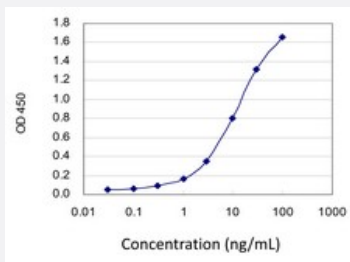
Immunofluorescence

Immunofluorescence staining on non-fixed, non-permeabilized MDA-MB-231 cells using FITC conjugated Cell-Surface Vimentin (CSV) monoclonal antibody, clone 84-1 for CSV (Green) and DAPI for nucleus (Blue).



Immunofluorescence

Immunofluorescence staining of CSV on isolated LM7 cancer cells and leukocytes using Cell-Surface Vimentin (CSV) monoclonal antibody, clone 84-1. The cells were co-stained against DRAQ5, CSV and CD45. (Satelli A., et al. Cancer Research 2014; 74:1645-1650)

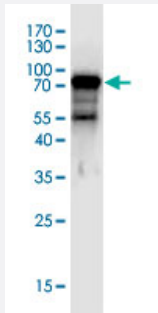
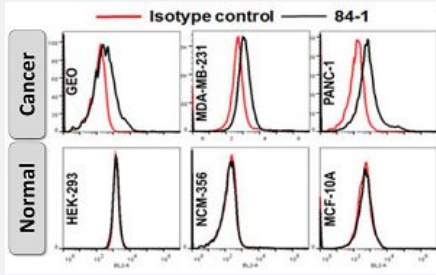


Sandwich ELISA (Recombinant protein)

Detection limit for recombinant GST tagged VIM is 0.1 ng/ml as a capture antibody.

Flow Cytometry

Flow cytometric analysis of CSV expression in cancer (top) and normal (bottom) cell lines using Cell-Surface Vimentin (CSV) monoclonal antibody, clone 84-1. Isotype controls were used as negative controls. (Satelli A., et al., Clinical Cancer Research 2014; 21(4):899-906)



Western Blot detection against Immunogen.

Specification

Product Description Mouse monoclonal antibody recognizes human cell-surface vimentin (CSV). This product is belong to Cell Culture Grade Antibody (CX Grade).

Immunogen Human recombinant vimentin

Host Mouse

Reactivity Human

Interspecies Antigen Sequence Mouse (100); Rat (100)

Form Liquid

Preparation Method Cell Culture Production

Isotype IgG2b, kappa

Storage Buffer In 1x PBS, pH 7.4

Storage Instruction Store at -20°C or lower. Aliquot to avoid repeated freezing and thawing.

Note

Cell-Surface Vimentin (CSV) detecting antibody is best used before cell fixation and permeabilization. If fixation is required, please use Abnova's [Special Fixative](#).

Cell-Surface Vimentin (CSV) antibody is a pending MD Anderson patent which has been exclusively licensed to Abnova Corporation.

Applications

- Western Blot (Cell lysate)

Cell-Surface Vimentin (CSV) monoclonal antibody, clone 84-1. Western Blot analysis of VIM expression in MDA-MB-231.

[Protocol Download](#)

- Western Blot (Cell lysate)

Cell-Surface Vimentin (CSV) monoclonal antibody, clone 84-1. Western Blot analysis of VIM expression in SKNB2.

[Protocol Download](#)

- Western Blot (Cell lysate)

Cell-Surface Vimentin (CSV) monoclonal antibody, clone 84-1. Western Blot analysis of VIM expression in PC-3.

[Protocol Download](#)

- Western Blot (Recombinant protein)

[Protocol Download](#)

- Immunofluorescence

Immunofluorescence staining on non-fixed, non-permeabilized MDA-MB-231 cells using FITC conjugated Cell-Surface Vimentin (CSV) monoclonal antibody, clone 84-1 for CSV (Green) and DAPI for nucleus (Blue).

- Immunofluorescence

Immunofluorescence staining of CSV on isolated LM7 cancer cells and leukocytes using Cell-Surface Vimentin (CSV) monoclonal antibody, clone 84-1. The cells were co-stained against DRAQ5, CSV and CD45. (Satelli A., et al. Cancer Research 2014; 74:1645-1650)

- Sandwich ELISA (Recombinant protein)

Detection limit for recombinant GST tagged VIM is 0.1 ng/ml as a capture antibody.

[Protocol Download](#)

- ELISA

- Flow Cytometry

Flow cytometric analysis of CSV expression in cancer (top) and normal (bottom) cell lines using Cell-Surface Vimentin (CSV) monoclonal antibody, clone 84-1. Isotype controls were used as negative controls. (Satelli A., et al., Clinical Cancer Research 2014; 21(4):899-906)

Gene Info — VIM

Entrez GeneID [7431](#)

Gene Name VIM

Gene Alias FLJ36605

Gene Description vimentin

Omim ID [193060](#)

Gene Ontology [Hyperlink](#)

Gene Summary This gene encodes a member of the intermediate filament family. Intermediate filamentents, along with microtubules and actin microfilaments, make up the cytoskeleton. The protein encoded by thi s gene is responsible for maintaining cell shape, integrity of the cytoplasm, and stabilizing cytoske letal interactions. It is also involved in the immune response, and controls the transport of low-dens ity lipoprotein (LDL)-derived cholesterol from a lysosome to the site of esterification. It functions a s an organizer of a number of critical proteins involved in attachment, migration, and cell signaling. Mutations in this gene causes a dominant, pulverulent cataract

Other Designations OTTHUMP00000019224

Publication Reference

- [A surrogate marker for very early-stage tau pathology is detectable by molecular magnetic resonance imaging.](#)

Parag Parekh, Qingshan Mu, Andrew Badachhpe, Rohan Bhavane, Mayank Srivastava, Laxman Devkota, Xianwei Sun, Prajwal Bhandari, Jason L Eriksen, Eric Tanifum, Ketan Ghaghada, Ananth Annapragada.

Theranostics 2022 Jul; 12(12):5504.

Application: IF, Mouse, Brain tissue, H-SY5Y cell

- [Glioblastoma Multiforme Selective Nanomedicines for Improved Anti-Cancer Treatments.](#)

Jason Thomas Duskey, Arianna Rinaldi, Ilaria Ottonelli, Riccardo Caraffi, Chiara Alessia De Benedictis, Ann Katrin Sauer, Giovanni Tosi, Maria Angela Vandelli, Barbara Ruozzi, Andreas Martin Grabrucker.

Pharmaceutics 2022 Jul; 14(7):1450.

Application: Immunogen, Rat, C6 cells

Disease

- [Alzheimer disease](#)
- [Anorexia Nervosa](#)
- [Bulimia](#)
- [Cognition](#)
- [Genetic Predisposition to Disease](#)