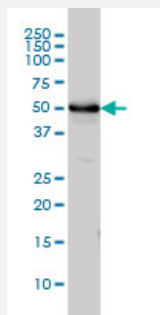


TUBA4A monoclonal antibody (M01A), clone 2E11

Catalog # H00007277-M01A

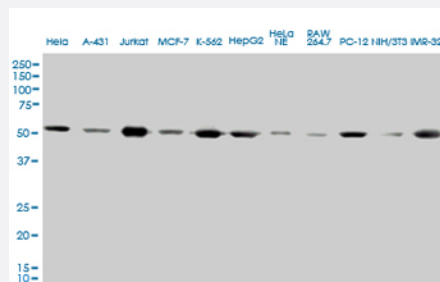
Size 200 uL

Applications



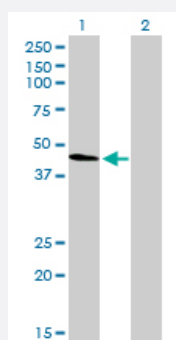
Western Blot (Cell lysate)

TUBA1 monoclonal antibody (M01A), clone 2E11. Western Blot analysis of TUBA1 expression in HeLa.



Western Blot (Cell lysate)

TUBA1 monoclonal antibody (M01A), clone 2E11. Western Blot analysis of TUBA1 expression in different Cell lines and Human Tissue.

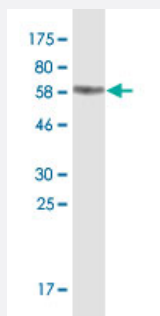


Western Blot (Transfected lysate)

Western Blot analysis of TUBA1 expression in transfected 293T cell line by TUBA1 monoclonal antibody (M01A), clone 2E11.

Lane 1: TUBA1 transfected lysate(49.9 KDa).

Lane 2: Non-transfected lysate.



Western Blot detection against Immunogen (75.02 KDa) .

Specification

| | |
|--------------------------------|--|
| Product Description | Mouse monoclonal antibody raised against a full-length recombinant TUBA4A. |
| Immunogen | TUBA4A (AAH09238, 1 a.a. ~ 448 a.a) full-length recombinant protein with GST tag. MW of the GST tag alone is 26 KDa. |
| Sequence | MRECISVHVGQAGVQMGNACWELCYLEHGIQPDGQMPSDKTIGGGDDSFSTFFCETGAGKHVP RAVFVDLEPTVIDEIRNGPYRQLFHPEQLITGKEDAANNYARGHYTIGKEIIDPVLDRIRKLSAQCTGL QGFLVFHSFGGGTSGGFTSLLMERLSVDYGKSKLEFSYPAPQVSTAVVEPYNSILTTHTLEHS DCAFMVDNEAIDICRRNLDIERPTYTNLNRLISQVSSITASLRFDGALNVDLTFEQTNLVPYPRIHF PLATYAPVISAEEKAYHEQLSVAEITNACFEPANQMVKCDPRHGKYMACECLLYRGDVVPKDVNAAI AAIKTKRSIQFVDWCPTGFKVGINYQPPTVVPGGDLAKVQRAVCMLSNNTAIAEAWARLDHKFDL MYAKRAVHWYVGEEMEEGEFSEAREDMAALEKDYEEVGIDSYEDEDEGEE |
| Host | Mouse |
| Reactivity | Human |
| Isotype | IgG2b Kappa |
| Quality Control Testing | Antibody Reactive Against Recombinant Protein. Western Blot detection against Immunogen (75.02 KDa) . |
| Storage Buffer | In ascites fluid |
| Storage Instruction | Store at -20°C or lower. Aliquot to avoid repeated freezing and thawing. |

Applications

- Western Blot (Cell lysate)

TUBA1 monoclonal antibody (M01A), clone 2E11. Western Blot analysis of TUBA1 expression in HeLa.

[Protocol Download](#)

- Western Blot (Cell lysate)

TUBA1 monoclonal antibody (M01A), clone 2E11. Western Blot analysis of TUBA1 expression in different Cell lines and Human Tissue.

[Protocol Download](#)

- Western Blot (Transfected lysate)

Western Blot analysis of TUBA1 expression in transfected 293T cell line by TUBA1 monoclonal antibody (M01A), clone 2E11.

Lane 1: TUBA1 transfected lysate(49.9 KDa).

Lane 2: Non-transfected lysate.

[Protocol Download](#)

- Western Blot (Recombinant protein)

[Protocol Download](#)

- ELISA

Gene Info — TUBA4A

Entrez GeneID [7277](#)

GeneBank Accession# [BC009238](#)

Protein Accession# [AAH09238](#)

Gene Name TUBA4A

Gene Alias FLJ30169, H2-ALPHA, TUBA1

Gene Description tubulin, alpha 4a

Omim ID [191110](#)

Gene Ontology [Hyperlink](#)

Gene Summary Microtubules of the eukaryotic cytoskeleton perform essential and diverse functions and are composed of a heterodimer of alpha and beta tubulin. The genes encoding these microtubule constituents are part of the tubulin superfamily, which is composed of six distinct families. Genes from the alpha, beta and gamma tubulin families are found in all eukaryotes. The alpha and beta tubulins represent the major components of microtubules, while gamma tubulin plays a critical role in the nucleation of microtubule assembly. There are multiple alpha and beta tubulin genes and they are highly conserved among and between species. This gene encodes an alpha tubulin that is a highly conserved homolog of a rat testis-specific alpha tubulin. [provided by RefSeq]

Other Designations

tubulin alpha-1 chain|tubulin, alpha 1 (testis specific)

Pathway

- [Gap junction](#)
- [Pathogenic Escherichia coli infection - EHEC](#)

Disease

- [Diabetes Mellitus](#)