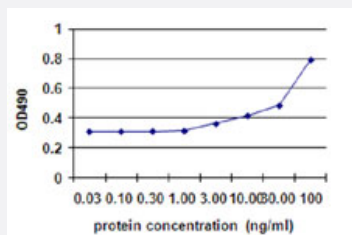


TBX3 (Human) Matched Antibody Pair

Catalog # H00006926-AP41

Size 1 Set

Applications



Sandwich ELISA detection sensitivity ranging from 1 ng/ml to 100 ng/ml.

Specification

Product Description	This antibody pair set comes with matched antibody pair to detect and quantify protein level of human TBX3.
Reactivity	Human
Quality Control Testing	Standard curve using recombinant protein (H00006926-Q01) as an analyte. Sandwich ELISA detection sensitivity ranging from 1 ng/ml to 100 ng/ml.
Supplied Product	Antibody pair set content: 1. Capture antibody: mouse monoclonal anti-TBX3, IgG1 Kappa (100 ug) 2. Detection antibody: biotinylated mouse monoclonal anti-TBX3, IgG2a Kappa (50 ug) *Reagents are sufficient for at least 3-5 x 96 well plates using recommended protocols.
Storage Instruction	Store reagents of the antibody pair set at -20°C or lower. Please aliquot to avoid repeated freeze thaw cycle. Reagents should be returned to -20°C storage immediately after use.

Applications

- ELISA Pair (Recombinant protein)

[Protocol Download](#)

Gene Info — TBX3

Entrez GeneID [6926](#)

Gene Name TBX3

Gene Alias TBX3-ISO, UMS, XHL

Gene Description T-box 3

Omim ID [181450 601621](#)

Gene Ontology [Hyperlink](#)

Gene Summary This gene is a member of a phylogenetically conserved family of genes that share a common DNA-binding domain, the T-box. T-box genes encode transcription factors involved in the regulation of developmental processes. This protein is a transcriptional repressor and is thought to play a role in the anterior/posterior axis of the tetrapod forelimb. Mutations in this gene cause ulnar-mammary syndrome, affecting limb, apocrine gland, tooth, hair, and genital development. Alternative splicing of this gene results in three transcript variants encoding different isoforms; however, the full length nature of one variant has not been determined. [provided by RefSeq]

Other Designations T-box 3 protein|T-box transcription factor TBX3|bladder cancer related protein XHL

Disease

- [Atrial Fibrillation](#)
- [Cardiovascular Diseases](#)
- [Diabetes Mellitus](#)
- [Edema](#)
- [Genetic Predisposition to Disease](#)
- [Hypertension](#)