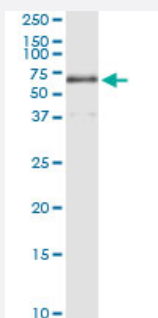


TBL1X (Human) IP-WB Antibody Pair

Catalog # H00006907-PW1

Size 1 Set

Applications



Immunoprecipitation of TBL1X transfected lysate using rabbit polyclonal anti-TBL1X and Protein A Magnetic Bead ([U0007](#)), and immunoblotted with mouse purified polyclonal anti-TBL1X.

Specification

Product Description	This IP-WB antibody pair set comes with one antibody for immunoprecipitation and another to detect the precipitated protein in western blot.
Reactivity	Human
Interspecies Antigen Sequence	Mouse (94); Rat (94)
Quality Control Testing	Immunoprecipitation-Western Blot (IP-WB) Immunoprecipitation of TBL1X transfected lysate using rabbit polyclonal anti-TBL1X and Protein A Magnetic Bead (U0007), and immunoblotted with mouse purified polyclonal anti-TBL1X.
Supplied Product	Antibody pair set content: 1. Antibody pair for IP: rabbit polyclonal anti-TBL1X (300 ul) 2. Antibody pair for WB: mouse purified polyclonal anti-TBL1X (50 ug)
Storage Instruction	Store reagents of the antibody pair set at -20°C or lower. Please aliquot to avoid repeated freeze thaw cycle. Reagents should be returned to -20°C storage immediately after use.

Applications

- Immunoprecipitation-Western Blot

[Protocol Download](#)

Gene Info — TBL1X

Entrez GeneID [6907](#)

Gene Name TBL1X

Gene Alias EBI, SMAP55, TBL1

Gene Description transducin (beta)-like 1X-linked

Omim ID [300196](#)

Gene Ontology [Hyperlink](#)

Gene Summary

The protein encoded by this gene has sequence similarity with members of the WD40 repeat-containing protein family. The WD40 group is a large family of proteins, which appear to have a regulatory function. It is believed that the WD40 repeats mediate protein-protein interactions and members of the family are involved in signal transduction, RNA processing, gene regulation, vesicular trafficking, cytoskeletal assembly and may play a role in the control of cytotypic differentiation. This encoded protein is found as a subunit in corepressor SMRT (silencing mediator for retinoid and thyroid receptors) complex along with histone deacetylase 3 protein. This gene is located adjacent to the ocular albinism gene and it is thought to be involved in the pathogenesis of the ocular albinism with late-onset sensorineural deafness phenotype. Four transcript variants encoding two different isoforms have been found for this gene. This gene is highly similar to the Y chromosome TBL1Y gene. [provided by RefSeq]

Other Designations F-box-like/WD repeat-containing protein TBL1X|OTTHUMP00000022880|transducin beta-like 1X

Pathway

- [Wnt signaling pathway](#)