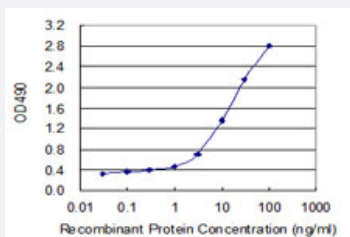


PSMD9 (Human) Matched Antibody Pair

Catalog # H00005715-AP22

Size 1 Set

Applications



Sandwich ELISA detection sensitivity ranging from 0.1 ng/ml to 100 ng/ml.

Specification

Product Description	This antibody pair set comes with a matched antibody pair to detect and quantify the protein level of human PSMD9.
Reactivity	Human
Quality Control Testing	Standard curve using recombinant protein (H00005715-P01) as an analyte. Sandwich ELISA detection sensitivity ranging from 0.1 ng/ml to 100 ng/ml.
Supplied Product	Antibody pair set content: 1. Capture antibody: rabbit MaxPab® affinity purified polyclonal anti-PSMD9 (100 ug) 2. Detection antibody: mouse purified polyclonal anti-PSMD9 (20 ug) *Reagents are sufficient for at least 1-2 x 96 well plates using recommended protocols.
Storage Instruction	Store reagents of the antibody pair set at -20°C or lower. Please aliquot to avoid repeated freeze thaw cycle. Reagents should be returned to -20°C storage immediately after use.

Applications

- ELISA Pair (Recombinant protein)

[Protocol Download](#)

Gene Info — PSMD9

Entrez GeneID	5715
Gene Name	PSMD9
Gene Alias	MGC8644, Rpn4, p27
Gene Description	proteasome (prosome, macropain) 26S subunit, non-ATPase, 9
Omim ID	603146
Gene Ontology	Hyperlink
Gene Summary	<p>The 26S proteasome is a multicatalytic proteinase complex with a highly ordered structure composed of 2 complexes, a 20S core and a 19S regulator. The 20S core is composed of 4 rings of 28 non-identical subunits; 2 rings are composed of 7 alpha subunits and 2 rings are composed of 7 beta subunits. The 19S regulator is composed of a base, which contains 6 ATPase subunits and 2 non-ATPase subunits, and a lid, which contains up to 10 non-ATPase subunits. Proteasomes are distributed throughout eukaryotic cells at a high concentration and cleave peptides in an ATP/ubiquitin-dependent process in a non-lysosomal pathway. An essential function of a modified proteasome, the immunoproteasome, is the processing of class I MHC peptides. This gene encodes a non-ATPase subunit of the 19S regulator. [provided by RefSeq]</p>
Other Designations	26S proteasome regulatory subunit p27 homolog of rat Bridge 1 proteasome 26S non-ATPase regulatory subunit 9 proteasome 26S non-ATPase subunit 9

Disease

- [Depressive Disorder](#)
- [Diabetes Mellitus](#)
- [Genetic Predisposition to Disease](#)
- [Inflammation](#)