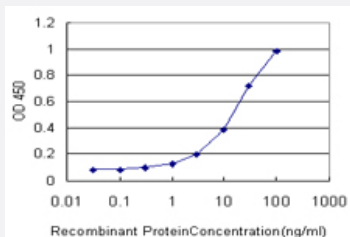


ORC4L monoclonal antibody (M05), clone 2A8

Catalog # H00005000-M05

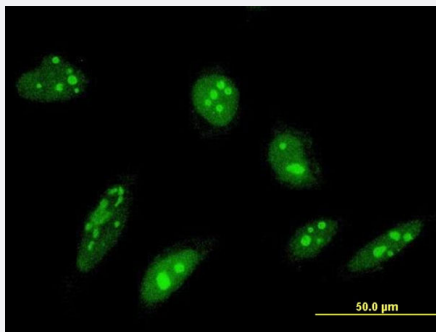
Size 100 ug

Applications



Sandwich ELISA (Recombinant protein)

Detection limit for recombinant GST tagged ORC4L is approximately 1ng/ml as a capture antibody.



Immunofluorescence

Immunofluorescence of monoclonal antibody to ORC4L on HeLa cell .
[antibody concentration 10 ug/ml]

Specification

Product Description	Mouse monoclonal antibody raised against a full length recombinant ORC4L.
Immunogen	ORC4L (AAH05388, 1 a.a. ~ 248 a.a) full-length recombinant protein with GST tag. MW of the GST tag alone is 26 KDa.
Sequence	MSSRKSKSNSLIHTECLSQVQRILRERFCRQSPHSNLFQVQVQYKHLSELLKRTALHGESNSVLIIG PRGSGKTMILSHALKELMEIEEVSENVLQVHLNGLLQINDKIALKEITRQLNLENNVGDGVFGSFAE NLSFLLLEALKKGDRTSSCPVIFILDEFDLFAHHKNQTLLYNLFDISQSAQTPIAVIGLTCRLDILELLEK RVKSRFSHRQIHLMNSTFGFPQYVKIFKEQLSLPAEFPDKVFAEK
Host	Mouse
Reactivity	Human

Isotype	IgG2b Kappa
Quality Control Testing	Antibody Reactive Against Recombinant Protein.
Storage Buffer	In 1x PBS, pH 7.4
Storage Instruction	Store at -20°C or lower. Aliquot to avoid repeated freezing and thawing.

Applications

- Sandwich ELISA (Recombinant protein)

Detection limit for recombinant GST tagged ORC4L is approximately 1ng/ml as a capture antibody.

[Protocol Download](#)

- ELISA

- Immunofluorescence

Immunofluorescence of monoclonal antibody to ORC4L on HeLa cell . [antibody concentration 10 ug/ml]

Gene Info — ORC4L

Entrez GeneID	5000
GeneBank Accession#	BC005388
Protein Accession#	AAH05388
Gene Name	ORC4L
Gene Alias	ORC4, ORC4P
Gene Description	origin recognition complex, subunit 4-like (yeast)
Omim ID	603056
Gene Ontology	Hyperlink
Gene Summary	<p>The origin recognition complex (ORC) is a highly conserved six subunit protein complex essential for the initiation of the DNA replication in eukaryotic cells. Studies in yeast demonstrated that ORC binds specifically to origins of replication and serves as a platform for the assembly of additional initiation factors such as Cdc6 and Mcm proteins. The protein encoded by this gene is a subunit of the ORC complex. It has been shown to form a core complex with ORC2L, -3L, and -5L. Three alternatively spliced transcript variants encoding the same protein have been reported. [provided by RefSeq]</p>

Other Designations

origin recognition complex subunit 4

Pathway

- [Cell cycle](#)

Disease

- [Genetic Predisposition to Disease](#)