

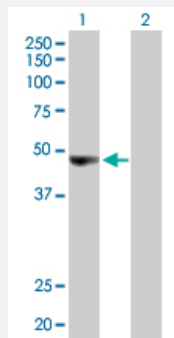
MaxPab®

ORC4L purified MaxPab rabbit polyclonal antibody (D01P)

Catalog # H00005000-D01P

Size 100 ug

Applications



Western Blot (Transfected lysate)

Western Blot analysis of ORC4L expression in transfected 293T cell line ([H00005000-T02](#)) by ORC4L MaxPab polyclonal antibody.

Lane 1: ORC4L transfected lysate(50.40 KDa).

Lane 2: Non-transfected lysate.

Specification

Product Description

Rabbit polyclonal antibody raised against a full-length human ORC4L protein.

Immunogen

ORC4L (NP_002543.2, 1 a.a. ~ 436 a.a) full-length human protein.

Sequence

MSSRKSKSNSLIHTECLSQVQRILRERFCRQSPHSNLFQVQVQYKHLSELLKRTALHGESNSVLIIG
PRGSGKTMLINHALKELMEIEEVSENVLQVHLNGLLQINDKIALKEITRQLNLENNVGDVFGSFAE
NLSFLLEALKKGDRITSSCPVIFILDEFDLFAHHKNQTLNLFDISQSAQTPIAVIGLTCRLDILELLEK
RVKSRFSHRQIHLMNSTFGFPQYVKIFKEQLSLPAEFDPKVF AEKWNENVQYLSEDRSVQEV LQK
HFNISKNLRS LHM LLM LALNRVTASHPFMTAVDLMEASQLCSMDSKANIVHGLSVLEICLIAMKHL
NDIYEEEPFNFQMVYNEFQKFVQRKAHSVYNFEKPVVMKAFEHLQQLELIKPMERTSGNSQREYQ
LMKLLLDNTQIMNALQKYPNCPTDVRQWATSSLSWL

Host

Rabbit

Reactivity

Human

Quality Control Testing

Antibody reactive against mammalian transfected lysate.

Storage Buffer

In 1x PBS, pH 7.4

Storage Instruction

Store at -20°C or lower. Aliquot to avoid repeated freezing and thawing.

Applications

- Western Blot (Transfected lysate)

Western Blot analysis of ORC4L expression in transfected 293T cell line ([H00005000-T02](#)) by ORC4L MaxPab polyclonal antibody.

Lane 1: ORC4L transfected lysate(50.40 KDa).

Lane 2: Non-transfected lysate.

[Protocol Download](#)

Gene Info — ORC4L

Entrez GeneID [5000](#)

GeneBank Accession# [NM_002552](#)

Protein Accession# [NP_002543.2](#)

Gene Name ORC4L

Gene Alias ORC4, ORC4P

Gene Description origin recognition complex, subunit 4-like (yeast)

Omim ID [603056](#)

Gene Ontology [Hyperlink](#)

Gene Summary The origin recognition complex (ORC) is a highly conserved six subunit protein complex essential for the initiation of the DNA replication in eukaryotic cells. Studies in yeast demonstrated that ORC binds specifically to origins of replication and serves as a platform for the assembly of additional initiation factors such as Cdc6 and Mcm proteins. The protein encoded by this gene is a subunit of the ORC complex. It has been shown to form a core complex with ORC2L, -3L, and -5L. Three alternatively spliced transcript variants encoding the same protein have been reported. [provided by RefSeq]

Other Designations origin recognition complex subunit 4

Pathway

- [Cell cycle](#)

Disease

- [Genetic Predisposition to Disease](#)