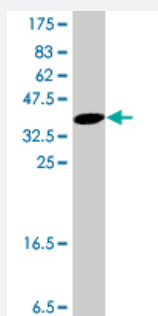


MAB21L1 polyclonal antibody (A01)

Catalog # H00004081-A01

Size 50 uL

Applications



Western Blot detection against Immunogen (38.1 KDa) .

Specification

Product Description	Mouse polyclonal antibody raised against a partial recombinant MAB21L1.
Immunogen	MAB21L1 (NP_005575, 250 a.a. ~ 358 a.a) partial recombinant protein with GST tag.
Sequence	CLSILKTLRDRHLELPGQPLNNYHMKTLVSYECEKHPRESDWDESCLGDRNLGILLQLISCLQCRR CPHYFLPNLDLFQGKPHSALENAAKQWRLAREILTNPKSLEK
Host	Mouse
Reactivity	Human
Interspecies Antigen Sequence	Mouse (100); Rat (100)
Quality Control Testing	Antibody Reactive Against Recombinant Protein. Western Blot detection against Immunogen (38.1 KDa) .
Storage Buffer	50 % glycerol
Storage Instruction	Store at -20°C or lower. Aliquot to avoid repeated freezing and thawing.

Applications

- Western Blot (Recombinant protein)

[Protocol Download](#)

- ELISA

Gene Info — MAB21L1

Entrez GeneID [4081](#)

GeneBank Accession# [NM_005584](#)

Protein Accession# [NP_005575](#)

Gene Name MAB21L1

Gene Alias CAGR1, FLJ10197, Nbla00126

Gene Description mab-21-like 1 (C. elegans)

Omim ID [601280](#)

Gene Ontology [Hyperlink](#)

Gene Summary This gene is similar to the MAB-21 cell fate-determining gene found in C. elegans. It may be involved in eye and cerebellum development, and it has been proposed that expansion of a trinucleotide repeat region in the 5' UTR may play a role in a variety of psychiatric disorders. [provided by RefSeq]

Other Designations OTTHUMP00000018238|mab-21-like protein 1

Disease

- [Bipolar Disorder](#)