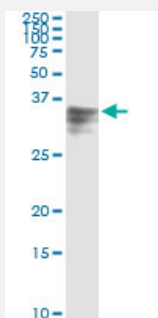


# HPX (Human) IP-WB Antibody Pair

Catalog # H00003263-PW1

Size 1 Set

## Applications



Immunoprecipitation of HPX transfected lysate using mouse monoclonal anti-HPX and Protein A Magnetic Bead ([U0007](#)), and immunoblotted with rabbit polyclonal anti-HPX.

## Specification

<b>Product Description</b>	This IP-WB antibody pair set comes with one antibody for immunoprecipitation and another to detect the precipitated protein in western blot.
<b>Reactivity</b>	Human
<b>Quality Control Testing</b>	Immunoprecipitation-Western Blot (IP-WB) Immunoprecipitation of HPX transfected lysate using mouse monoclonal anti-HPX and Protein A Magnetic Bead ( <a href="#">U0007</a> ), and immunoblotted with rabbit polyclonal anti-HPX.
<b>Supplied Product</b>	Antibody pair set content: 1. Antibody pair for IP: mouse monoclonal anti-HPX (300 ug) 2. Antibody pair for WB: rabbit polyclonal anti-HPX (50 ul)
<b>Storage Instruction</b>	Store reagents of the antibody pair set at -20°C or lower. Please aliquot to avoid repeated freeze thaw cycle. Reagents should be returned to -20°C storage immediately after use.

## Applications

- Immunoprecipitation-Western Blot

[Protocol Download](#)

## Gene Info — HPX

Entrez GeneID	<a href="#">3263</a>
Gene Name	HPX
Gene Alias	-
Gene Description	hemopexin
Omim ID	<a href="#">142290</a>
Gene Ontology	<a href="#">Hyperlink</a>
Gene Summary	This gene encodes a plasma glycoprotein that binds heme with high affinity. The encoded protein is an acute phase protein that transports heme from the plasma to the liver and may be involved in protecting cells from oxidative stress. [provided by RefSeq]
Other Designations	-

## Disease

- [Cardiovascular Diseases](#)
- [Diabetes Mellitus](#)
- [Edema](#)