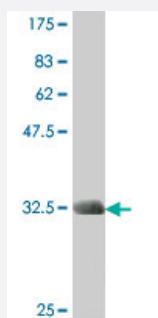


FSHPRH1 polyclonal antibody (A01)

Catalog # H00002491-A01

Size 50 uL

Applications



Western Blot detection against Immunogen (31.83 KDa) .

Specification

Product Description	Mouse polyclonal antibody raised against a partial recombinant FSHPRH1 .
Immunogen	FSHPRH1 (NP_006724, 471 a.a. ~ 522 a.a) partial recombinant protein with GST tag.
Sequence	KPLLLFDHLAQLFFTSTIYFKCSVLQSLKELLQNWLLWLSMDIHMKPVTNSPL
Host	Mouse
Reactivity	Human
Interspecies Antigen Sequence	Mouse (81); Rat (73)
Quality Control Testing	Antibody Reactive Against Recombinant Protein. Western Blot detection against Immunogen (31.83 KDa) .
Storage Buffer	50 % glycerol
Storage Instruction	Store at -20°C or lower. Aliquot to avoid repeated freezing and thawing.

Applications

- Western Blot (Recombinant protein)

[Protocol Download](#)

- ELISA

Gene Info — CENPI

Entrez GeneID [2491](#)

GeneBank Accession# [NM_006733](#)

Protein Accession# [NP_006724](#)

Gene Name CENPI

Gene Alias CENP-I, FSHPRH1, LRPR1, Mis6

Gene Description centromere protein I

Omim ID [300065](#)

Gene Ontology [Hyperlink](#)

Gene Summary The product of this gene is involved in the response of gonadal tissues to follicle-stimulating hormone. This gene is also a potential candidate for human X-linked disorders of gonadal development and gametogenesis. [provided by RefSeq]

Other Designations FSH primary response 1|OTTHUMP00000023671|follicle-stimulating hormone primary response protein|leucine-rich primary response protein 1