

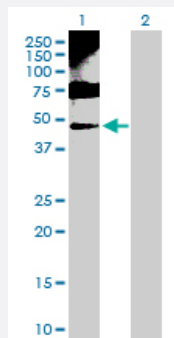
MaxPab®

ENO1 purified MaxPab rabbit polyclonal antibody (D01P)

Catalog # H00002023-D01P

Size 100 ug

Applications



Western Blot (Transfected lysate)

Western Blot analysis of ENO1 expression in transfected 293T cell line ([H00002023-T01](#)) by ENO1 MaxPab polyclonal antibody.

Lane 1: ENO1 transfected lysate(47.20 KDa).

Lane 2: Non-transfected lysate.

Specification

Product Description

Rabbit polyclonal antibody raised against a full-length human ENO1 protein.

Immunogen

ENO1 (NP_001419.1, 1 a.a. ~ 434 a.a) full-length human protein.

Sequence

MSILKIHAREIFDSRGNPTVEVDLFTSKGLFRAAVPSGASTGIYEALERDNDKTRYMGKGVSKAV
EHINKTIAPALVSKKLVNTEQEIKDKLMIEMDGTENKSKFGANAILGVSLAVCKAGAVEKGVPLYRHI
ADLAGNSEVILPVPFNVINGGSHAGNKLAMQEFMILPVGAANFREAMRIGAEVYHNLKNVIKEY
GKDATNVGDEGGFAPNILENKEGLELLKTAIGKAGYTDKVVIGMDVAASEFFRSGKYDLDFKSPD
DPSRYISPDQLADLYKSFIDYPVVSIEDPFDQDDWGAWQKFTASAGIQVVGDDLTVTNPKRIAKA
VNEKSCNCLLLKVNQIGSVTESLQACKLAQANGWGMVSHRSGETEDTFIADLVVGLCTGQIKTG
APCRSERLAKYNQLLRIEEELGSKAKFAGRNFNPLAK

Host

Rabbit

Reactivity

Human

Quality Control Testing

Antibody reactive against mammalian transfected lysate.

Storage Buffer

In 1x PBS, pH 7.4

Storage Instruction

Store at -20°C or lower. Aliquot to avoid repeated freezing and thawing.

Applications

- Western Blot (Transfected lysate)

Western Blot analysis of ENO1 expression in transfected 293T cell line ([H00002023-T01](#)) by ENO1 MaxPab polyclonal antibody.

Lane 1: ENO1 transfected lysate(47.20 KDa).

Lane 2: Non-transfected lysate.

[Protocol Download](#)

Gene Info — ENO1

Entrez GeneID	2023
GeneBank Accession#	NM_001428.2
Protein Accession#	NP_001419.1
Gene Name	ENO1
Gene Alias	ENO1L1, MBP-1, MPB1, NNE, PPH
Gene Description	enolase 1, (alpha)
Omim ID	172430
Gene Ontology	Hyperlink
Gene Summary	This gene encodes one of three enolase isoenzymes found in mammals; it encodes alpha-enolase, a homodimeric soluble enzyme, and also encodes a shorter monomeric structural lens protein, tau-crystallin. The two proteins are made from the same message. The full length protein, the isoenzyme, is found in the cytoplasm. The shorter protein is produced from an alternative translation start, is localized to the nucleus, and has been found to bind to an element in the c-myc promoter. A pseudogene has been identified that is located on the other arm of the same chromosome. [provided by RefSeq]
Other Designations	2-phospho-D-glycerate hydro-lyase MYC promoter-binding protein 1 OTTHUMP00000001706 alpha enolase like 1 enolase 1 non-neural enolase phosphopyruvate hydratase tau-crystallin

Pathway

- [Biosynthesis of alkaloids derived from histidine and purine](#)
- [Biosynthesis of alkaloids derived from ornithine](#)

- [Biosynthesis of alkaloids derived from shikimate pathway](#)
- [Biosynthesis of alkaloids derived from terpenoid and polyketide](#)
- [Biosynthesis of phenylpropanoids](#)
- [Biosynthesis of plant hormones](#)
- [Biosynthesis of terpenoids and steroids](#)
- [Glycolysis / Gluconeogenesis](#)
- [Metabolic pathways](#)
- [RNA degradation](#)

Disease

- [Myocardial Infarction](#)