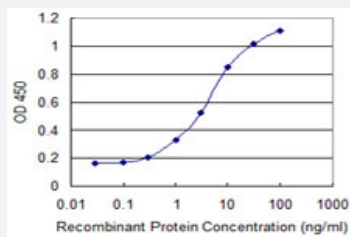


CSTA monoclonal antibody (M01), clone 1A11

Catalog # H00001475-M01

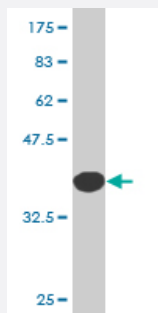
Size 100 ug

Applications



Sandwich ELISA (Recombinant protein)

Detection limit for recombinant GST tagged CSTA is 0.1 ng/ml as a capture antibody.



Western Blot detection against Immunogen (36.52 KDa) .

Specification

Product Description	Mouse monoclonal antibody raised against a full-length recombinant CSTA.
Immunogen	CSTA (AAH10379, 1 a.a. ~ 98 a.a) full-length recombinant protein with GST tag. MW of the GST tag alone is 26 KDa.
Sequence	MIPGGLSEAKPATPEIQENDKVKPQLEEKTNETYGKLEAVQYKTQVVAGTNYYIKVRAGDNKYMHL KVFKSLPGQNEDLVLVTGYQVDKNKDDDELTF
Host	Mouse
Reactivity	Human

Interspecies Antigen Sequence	Mouse (57); Rat (62)
Isotype	IgG2b Kappa
Quality Control Testing	Antibody Reactive Against Recombinant Protein. Western Blot detection against Immunogen (36.52 KDa) .
Storage Buffer	In 1x PBS, pH 7.4
Storage Instruction	Store at -20°C or lower. Aliquot to avoid repeated freezing and thawing.

Applications

- Western Blot (Recombinant protein)

[Protocol Download](#)

- Sandwich ELISA (Recombinant protein)

Detection limit for recombinant GST tagged CSTA is 0.1 ng/ml as a capture antibody.

[Protocol Download](#)

- ELISA

Gene Info — CSTA

Entrez GeneID	1475
GeneBank Accession#	BC010379
Protein Accession#	AAH10379
Gene Name	CSTA
Gene Alias	STF1, STFA
Gene Description	cystatin A (stefin A)
Omim ID	184600
Gene Ontology	Hyperlink

Gene Summary

The cystatin superfamily encompasses proteins that contain multiple cystatin-like sequences. Some of the members are active cysteine protease inhibitors, while others have lost or perhaps never acquired this inhibitory activity. There are three inhibitory families in the superfamily, including the type 1 cystatins (stefins), type 2 cystatins, and kininogens. This gene encodes a stefin that functions as a cysteine protease inhibitor, forming tight complexes with papain and the cathepsins B, H, and L. The protein is one of the precursor proteins of cornified cell envelope in keratinocytes and plays a role in epidermal development and maintenance. Stefins have been proposed as prognostic and diagnostic tools for cancer. [provided by RefSeq]

Other Designations

cystatin A|cystatin AS|stefin A

Disease

- [Genetic Predisposition to Disease](#)
- [Psoriasis](#)