

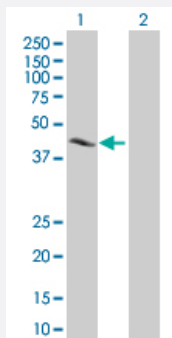
MaxPab®

# CREB1 MaxPab mouse polyclonal antibody (B01P)

Catalog # H00001385-B01P

Size 50 ug

## Applications

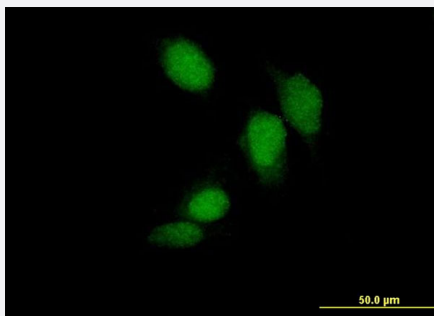


### Western Blot (Transfected lysate)

Western Blot analysis of CREB1 expression in transfected 293T cell line ([H00001385-T01](#)) by CREB1 MaxPab polyclonal antibody.

Lane 1: CREB1 transfected lysate(35.97 KDa).

Lane 2: Non-transfected lysate.



### Immunofluorescence

Immunofluorescence of purified MaxPab antibody to CREB1 on HeLa cell. [antibody concentration 10 ug/ml]

## Specification

### Product Description

Mouse polyclonal antibody raised against a full-length human CREB1 protein.

### Immunogen

CREB1 (NP\_004370, 1 a.a. ~ 327 a.a) full-length human protein.

### Sequence

MTMESGAENQQSGDAAVTEAENQQMTVQAQPQIATLAQVSMFAAHATSSAPTIVTLVQLPNGQT  
VQVHGVIQAAQPSVIQSPQVQTVQISTIAESEDSESVDSVTDSQKRREILSRRPSYRKILNDLSSD  
APGVPRIEEEKSEEETSAPAITTVTPPIYQTSSGQYIAITQGGAIQLANNGTDGVQGLQTLTMTNA  
AATQPGTTILQYAQTDDGQQILVPSNQVVVQAASGDVQTYQIRTAPTSTIAPGVVMASPPALPTQP  
AEEAARKREVRLMKNREAARECRRKKKEYVKCLENRVAVLENQNKTLIEELKALKDLYCHKSD

### Host

Mouse

<b>Reactivity</b>	Human
<b>Quality Control Testing</b>	Antibody reactive against mammalian transfected lysate.
<b>Storage Buffer</b>	In 1x PBS, pH 7.4
<b>Storage Instruction</b>	Store at -20°C or lower. Aliquot to avoid repeated freezing and thawing.

## Applications

- Western Blot (Transfected lysate)

Western Blot analysis of CREB1 expression in transfected 293T cell line ([H00001385-T01](#)) by CREB1 MaxPab polyclonal antibody.

Lane 1: CREB1 transfected lysate(35.97 KDa).

Lane 2: Non-transfected lysate.

[Protocol Download](#)

- Immunofluorescence

Immunofluorescence of purified MaxPab antibody to CREB1 on HeLa cell. [antibody concentration 10 ug/ml]

## Gene Info — CREB1

<b>Entrez GeneID</b>	<a href="#">1385</a>
<b>GeneBank Accession#</b>	<a href="#">NM_004379</a>
<b>Protein Accession#</b>	<a href="#">NP_004370</a>
<b>Gene Name</b>	CREB1
<b>Gene Alias</b>	CREB, MGC9284
<b>Gene Description</b>	cAMP responsive element binding protein 1
<b>Omim ID</b>	<a href="#">123810</a>
<b>Gene Ontology</b>	<a href="#">Hyperlink</a>

### Gene Summary

This gene encodes a transcription factor that is a member of the leucine zipper family of DNA binding proteins. This protein binds as a homodimer to the cAMP-responsive element, an octameric palindrome. The protein is phosphorylated by several protein kinases, and induces transcription of genes in response to hormonal stimulation of the cAMP pathway. Alternate splicing of this gene results in two transcript variants encoding different isoforms. [provided by RefSeq]

## Other Designations

active transcription factor CREB|cAMP-response element-binding protein-1|transactivator protein

## Pathway

- [Antigen processing and presentation](#)
- [Melanogenesis](#)
- [Prostate cancer](#)

## Disease

- [Alcoholism](#)
- [Alzheimer disease](#)
- [Anorexia Nervosa](#)
- [Arousal](#)
- [Asthma](#)
- [Avoidance Learning](#)
- [Bipolar Disorder](#)
- [Bulimia](#)
- [Cardiovascular Diseases](#)
- [Choice Behavior](#)
- [Cognition](#)
- [Depressive Disorder](#)
- [Diabetes Complications](#)
- [Diabetes Mellitus](#)
- [Disease Models](#)
- [Dominance](#)
- [Edema](#)
- [Genetic Predisposition to Disease](#)

- [Inflammation](#)
- [Lymphoma](#)
- [Memory](#)
- [Metabolic Syndrome X](#)
- [Mood Disorders](#)
- [Neoplasms](#)
- [Osteoporosis](#)
- [Pattern Recognition](#)
- [Personality Inventory](#)
- [Psychiatric Status Rating Scales](#)
- [Psychomotor Performance](#)
- [Schizophrenia](#)
- [Schizophrenic Psychology](#)
- [Sleep Disorders](#)
- [Weight Gain](#)