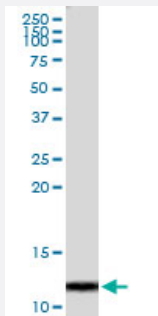


# CLPS (Human) IP-WB Antibody Pair

Catalog # H00001208-PW1

Size 1 Set

## Applications



Immunoprecipitation of CLPS transfected lysate using rabbit polyclonal anti-CLPS and Protein A Magnetic Bead ([U0007](#)), and immunoblotted with mouse polyclonal anti-CLPS.

## Specification

<b>Product Description</b>	This IP-WB antibody pair set comes with one antibody for immunoprecipitation and another to detect the precipitated protein in western blot.
<b>Reactivity</b>	Human
<b>Quality Control Testing</b>	Immunoprecipitation-Western Blot (IP-WB) Immunoprecipitation of CLPS transfected lysate using rabbit polyclonal anti-CLPS and Protein A Magnetic Bead ( <a href="#">U0007</a> ), and immunoblotted with mouse polyclonal anti-CLPS.
<b>Supplied Product</b>	Antibody pair set content: 1. Antibody pair for IP: rabbit polyclonal anti-CLPS (300 ul) 2. Antibody pair for WB: mouse polyclonal anti-CLPS (50 ul)
<b>Storage Instruction</b>	Store reagents of the antibody pair set at -20°C or lower. Please aliquot to avoid repeated freeze thaw cycle. Reagents should be returned to -20°C storage immediately after use.

## Applications

- Immunoprecipitation-Western Blot

[Protocol Download](#)

## Gene Info — CLPS

Entrez GeneID	<a href="#">1208</a>
Gene Name	CLPS
Gene Alias	-
Gene Description	colipase, pancreatic
Omim ID	<a href="#">120105</a>
Gene Ontology	<a href="#">Hyperlink</a>
Gene Summary	<p>The protein encoded by this gene is a cofactor needed by pancreatic lipase for efficient dietary lipid hydrolysis. It binds to the C-terminal, non-catalytic domain of lipase, thereby stabilizing an active conformation and considerably increasing the overall hydrophobic binding site. The gene product allows lipase to anchor noncovalently to the surface of lipid micelles, counteracting the destabilizing influence of intestinal bile salts. This cofactor is only expressed in pancreatic acinar cells, suggesting regulation of expression by tissue-specific elements. [provided by RefSeq]</p>
Other Designations	OTTHUMP00000016271 colipase pancreatic colipase preproprotein

## Disease

- [Diabetes Mellitus](#)
- [Genetic Predisposition to Disease](#)
- [Obesity](#)